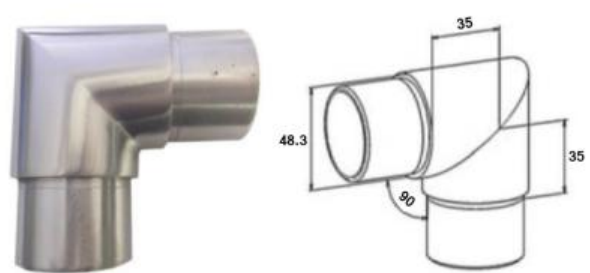
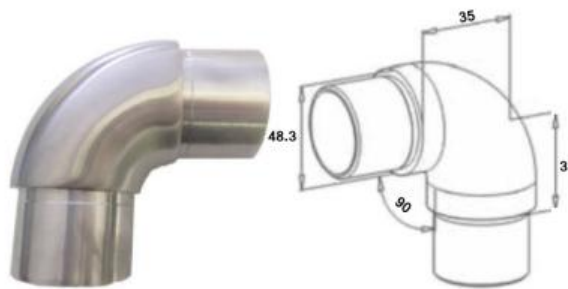


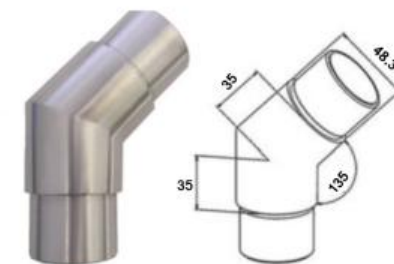
48-RV1003
90 Degree Short Radius Bend
 304/316



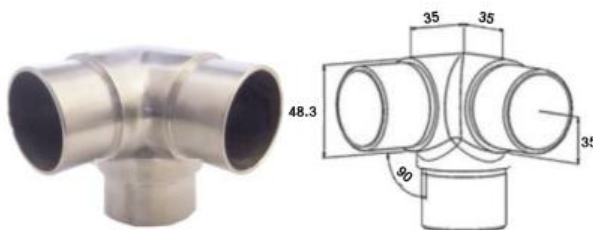
48-RV1005
90 Degree Sharp Bend
 304/316



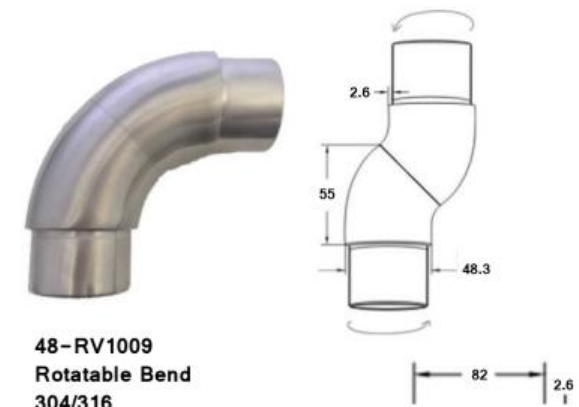
48-RV1008
90 Degree Radius Bend
 304/316



48-RV1007
135/45 Degree Connector
 304/316



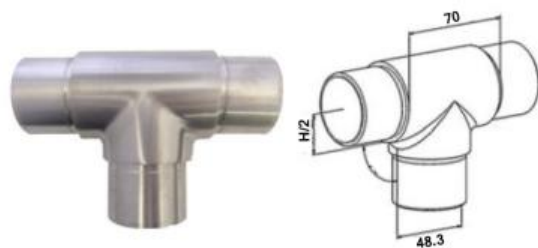
48-EVB1009
3 Way Corner Connector
 304/316



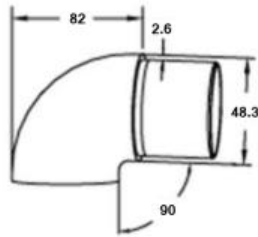
48-RV1009
Rotatable Bend
 304/316



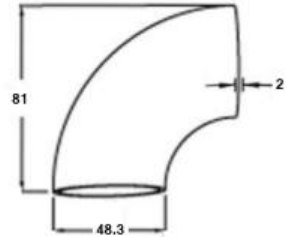
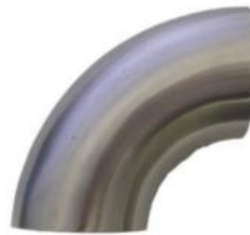
48-RV1001
Tube Connector
 304/316



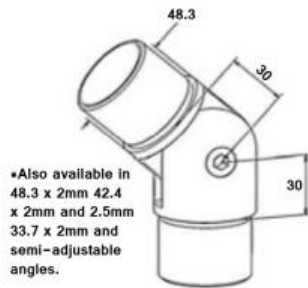
48-MVB1003
3 Way Connector
 304/316



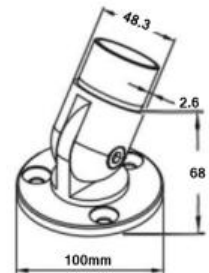
48-RV1018-FLAT
Flat End Scroll
304/316



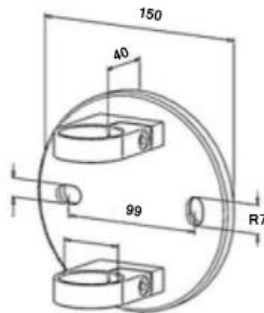
48-ROB
Weldable Elbow x 2mm Wall
304/316



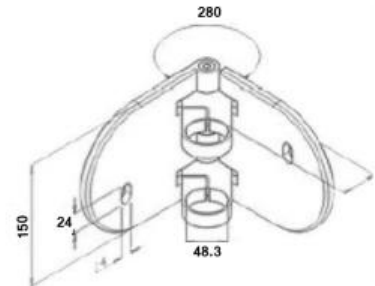
48-RV1004-ADJ
Adjustable Angle Changer
304/316



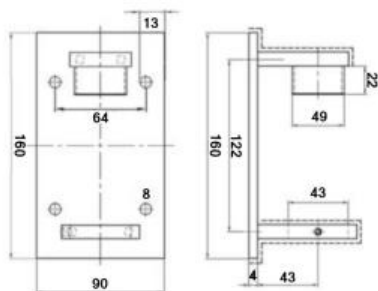
WALLPLATE-ADJ-48.3MM
Adjustable Wall Plate
304/316



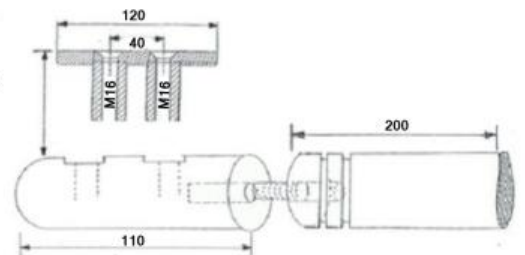
48-WND1001
Side Fix Baluster Clamp x 40mm Offset
304/316



48-WND1008
Internal/External Corner x 40mm Offset
304/316



WND1012-48.3-316
Blank Side Fix x 21mm Offset
316



WND1005-48-200
Side Fix Bracket 30/50/80mm Offset
304/316



BDH1005-100x200x48.3
200mm Spigot and 100mm Plate
304/316



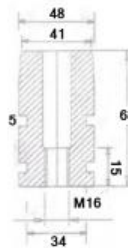
BDH1005-120x200x48.3
200mm Spigot and 120mm Plate
304/316



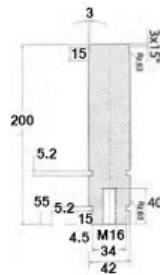
BDH1005-100
Smaller 68mm Spigot
x 100mm Plate
304/316



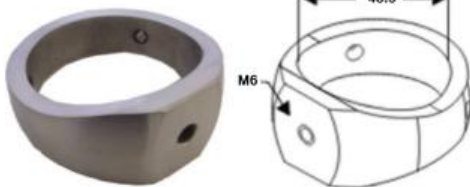
BDH1005-120
Smaller 68mm Spigot
x 120mm Plate
304/316



RHT1005-48.3-68
68mm High Spigot x M16
304/316



RHT1005-200-48.3
200mm High Solid Spigot x M16
304/316



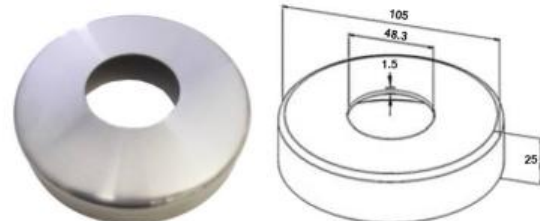
M6-CLIP-48
Clip with M6 Tap
304/316



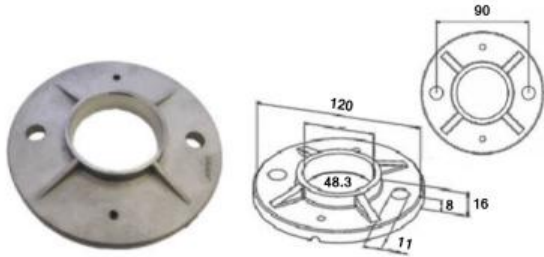
48-RA1006
Adaptor
304/316



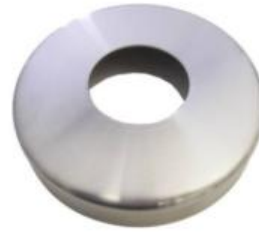
48-RON1012
Raw Weldable Plate
304/316



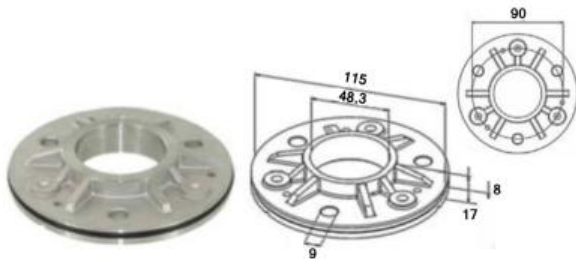
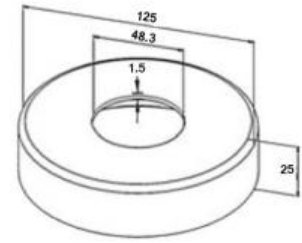
48-ROS1001
Cover Plate
304/316



48-RON1011
Raw Weldable Plate
304/316



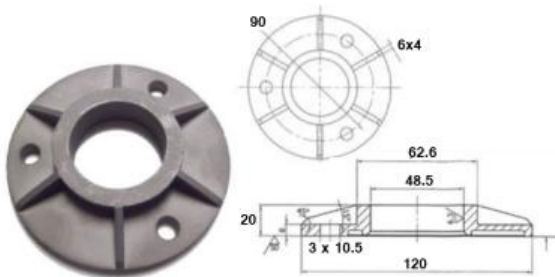
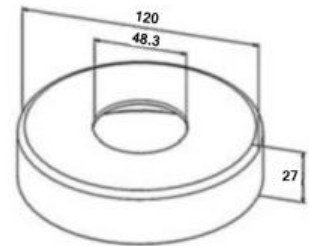
48-ROS1002
Cover Plate
304/316



48-RON1009-316
Raw Weldable Plate 115mm x 3 Hole x 90c/line
316



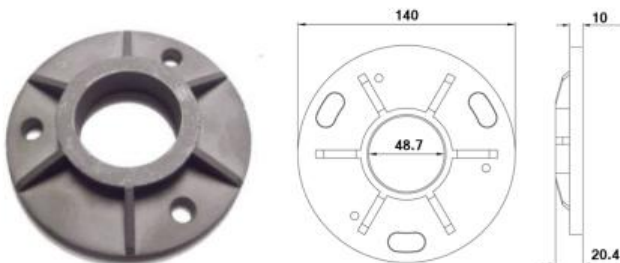
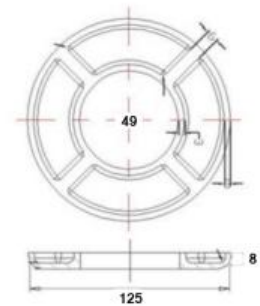
ROS1005-48.3-316
Cover Plate
316



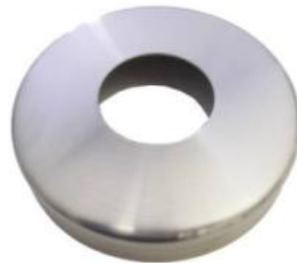
48-RON1016
Raw Weldable Plate 120mm x 3 Hole x 90 c/line
304/316



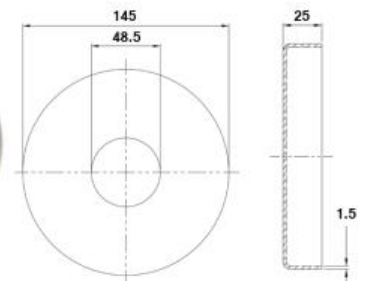
ROS1004-48
Low Cover Plate for Diamond Holes
316

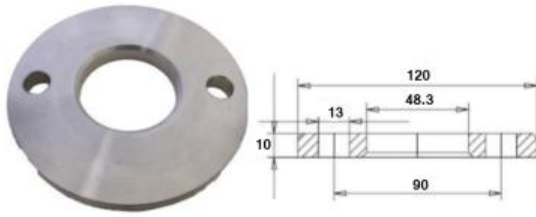


48-RON1017
Raw Weldable Plate 140mm x 3 Hole
316



48-ROS1003-145
145mm Cover Plate
316

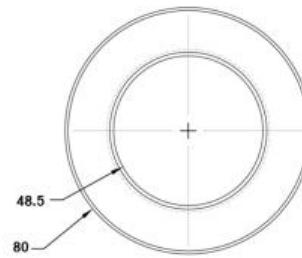
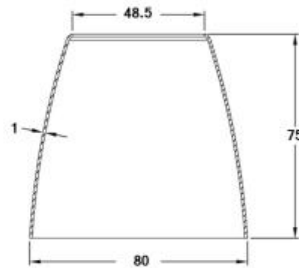




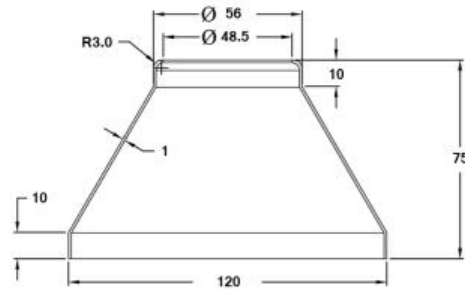
RON1010-120-483
Round Plate with M13 Holes
304/316



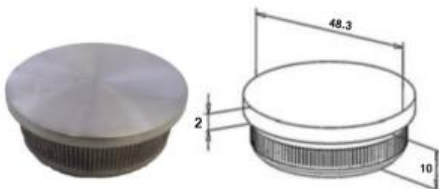
48-WALLPLATE
304/316



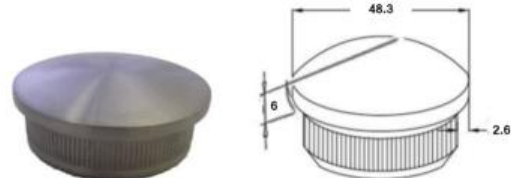
ROS110A-48.3
Asphalt Cover Plate 80 x 75 x 1mm x 48.3mm Tube
316G Satin/Mirror



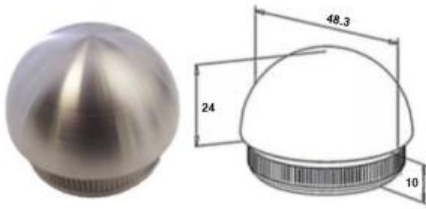
ROS1100B-48.3
Asphalt Cover Plate 120 x 75mm x 48.3mm Tube
316G Satin/Mirror



48-EK1002
Flat End Cap
304/316



48-EK1010
Convex End Cap
304/316



48-EK1018
Dome End Cap
304/316



48-EK1006
Flat End Cap with M8 Hole
304/316



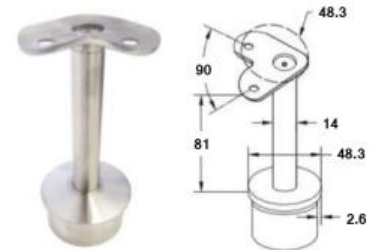
48-EK1014
Convex End Cap with M8 Hole
304/316



48-HH1005
Straight Neck (In part form)
304/316



48-HH1008
Adjustable Neck (In part form)
304/316



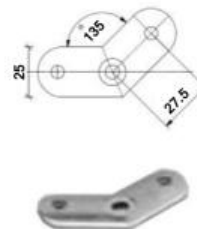
48-HH1005-90D
90 Degree Saddle (In part form)
304/316



48-HH1005-135
135 Degree Saddle (In part form)
304/316



HH1001K-H-50.8
Straight Saddle
304/316



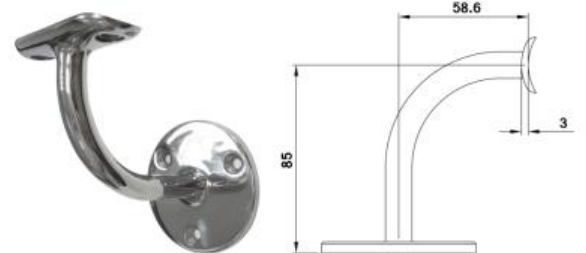
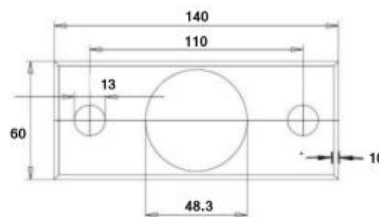
HH1001K-45-50.8
45 Degree Angle Saddle
304/316



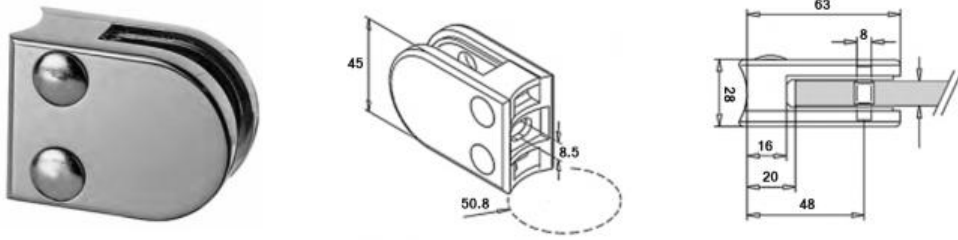
HH1001K-Z-50.8
90 Degree Angle Saddle
30/316



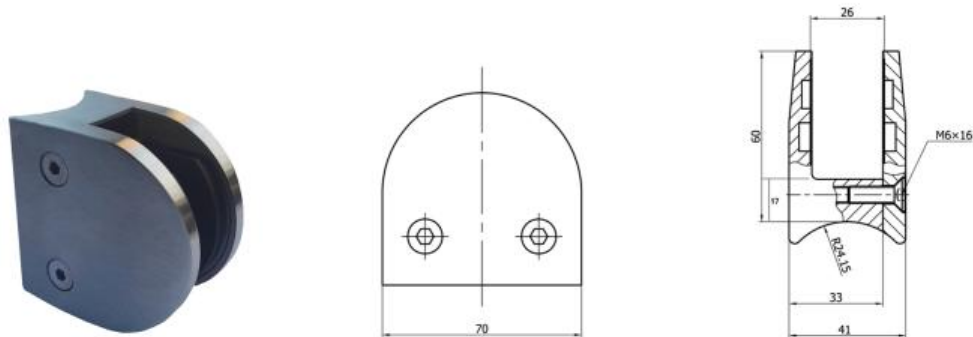
RON1014K-48.3-316
Weldable Plate - Satin Polished x 320
316



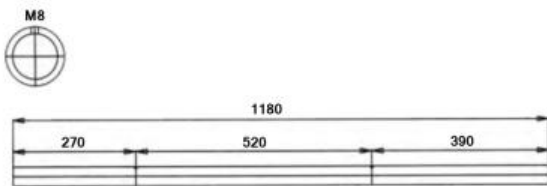
WS172 - 85mm Offset - 316 (Satin)
48.3mm Saddle, 85mm Offset
316 Satin



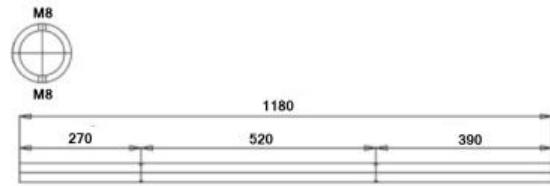
KLH10R-K-304 (304G Satin, 48.3mm 6-12mm Glass
 KLH10R-48.3K (316G Satin, 48.3mm 6-12mm Glass)
 KLH10R/M-48.3 (304G Mirror, 48.3mm 6-12mm Glass)
 KLH10R-K-316M (316G Mirror, 48.3mm 6-12mm Glass)
 KLH10U-48.3K (Untreated, 48.3mm 6-12mm Glass)
 KLH10Z-48.3K (Zintec, 48.3mm 6-12mm Glass)



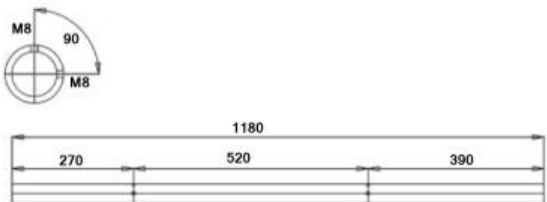
KLH21.5MM-R-316
 Suitable for 15, 17.52, 19 and 21.52mm Glass
 316 Grade, Satin / Mirror
 (Also available with a 'Flat Back')



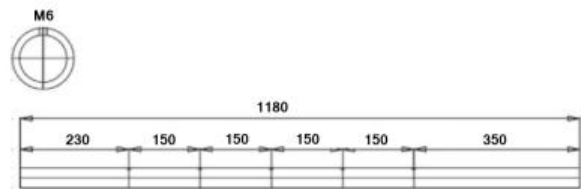
SP1001 - 1180mm High
 End Post 2 x M8 pre-drilled holes at 520mm c/c



SP1002 - 1180mm High
 Mid Post 4 x M8 pre-drilled holes by 180 degrees. Holes at 520mm c/c



SP1003 - 1180mm High
 90 Degree Corner Post 4 x M8 pre-drilled holes at 520mm c/c



SP1004 - 1180mm High
 5 x M6 pre-drilled set at 150mm c/c
 Ideal for rod and wire fittings

System Posts are also Available in 304 & 316 Grades and Satin & Mirror Finishes