

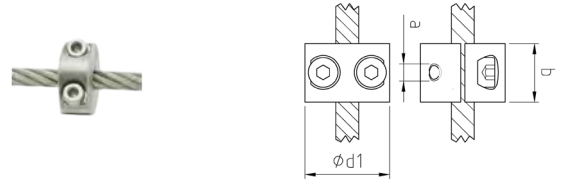


### Cable



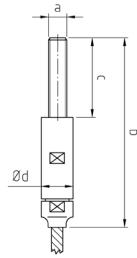
316 Outdoor		Ø
1830-0400-025	25	4mm
1830-0400-050	50	4mm
1830-0400-100	100	4mm
1830-0500-025	25	5mm
1830-0500-050	50	5mm
1830-0500-100	100	5mm
1830-0600-025	25	6mm
1830-0600-050	50	6mm
1830-0600-100	100	6mm

### Light clamp ring



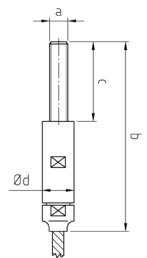
316 Outdoor		a	B	D1
1863-0400	1	4mm	10	15
1863-0500	1	5mm	10	24
1863-0600	1	6mm	10	24

### Screwed External thread Ends RH



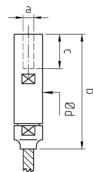
316 Outdoor		Ø	A	B	C
1826-0400-060	1	4mm	M6	115	60
1826-0500-060	1	5mm	M8	117	60
1826-0600-060	1	6mm	M8	117	60

### Screwed External thread Ends LH



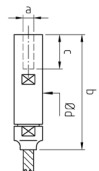
316 Outdoor		Ø	A	B	C
1827-0400-060	1	4mm	M6	115	60
1827-0500-060	1	5mm	M8	117	60
1827-0600-060	1	6mm	M8	117	60

### Screwed internal thread Ends RH



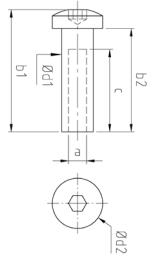
316 Outdoor		Ø	A	B	C	D
1831-0400	1	4mm	M6	55	18	13
1831-0500	1	5mm	M8	57	20	15
1831-0600	1	6mm	M8	57	20	15

### Screwed Internal thread Ends LH



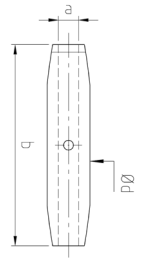
316 Outdoor		Ø	A	B	C	D
1832-0400	1	4mm	M6	55	18	13
1832-0500	1	5mm	M8	57	20	15
1832-0600	1	6mm	M8	57	20	15

### End stop internal thread RH



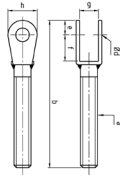
316 Outdoor		A	b1	b2	C	Ød1	Ød2
1869-0600-02	1	M6	35	30	20	8	14
1869-0800-02	1	M8	40	34	25	10	16

### Turnbuckle barrel LH/RH



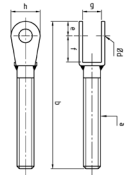
316 Outdoor		A	B	Ød
1875-0600	1	M6	92	10
1875-0800	1	M8	112	13,5

### Fork with external thread RH



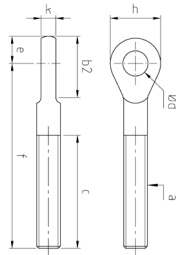
316 Outdoor		A	B	C	Ød	E	F	G
1871-0600	1	M6	73	47	5	6	12	7,5
1871-0800	1	M8	86	57	6	7	13	10

### Fork with external thread LH



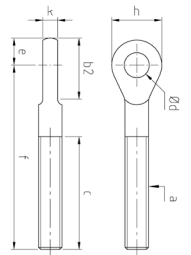
316 Outdoor		A	B	C	Ød	E	F	G
1872-0600	1	M6	73	47	5	6	12	7,5
1872-0800	1	M8	86	57	6	7	13	10

### Eye With External read RH read



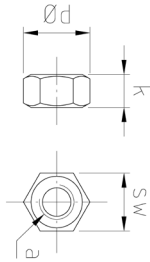
316 Outdoor		A	B	C	Ød	E	F
1885-0600	1	M6	16	47	6,5	7	61
1885-0800	1	M8	21	57	8,5	8,5	78

### Eye With External read Lh



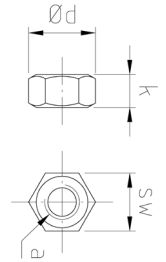
316 Outdoor		A	B	C	Ød	E	F
1886-0600	1	M6	16	47	6,5	7	61
1886-0800	1	M8	21	57	8,5	8,5	78

### Hexagon nut RH thread



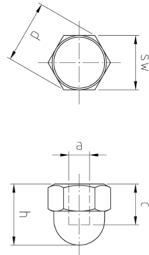
316 Outdoor		A	SW	K
1892-0600	1	M6	10	5
1892-0800	1	M8	13	6,5

### Hexagon nut LH thread



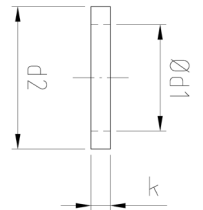
316 Outdoor		A	SW	K
1893-0600	1	M6	10	5
1893-0800	1	M8	13	6,5

### Dome nut RH



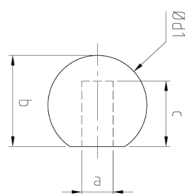
316 Outdoor		A	SW	C	H
1894-0600	1	M6	10	6	12
1894-0800	1	M8	13	8,5	15

### Flat washer



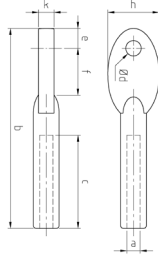
316 Outdoor		Ød1	Ød2	K
1896-0600	1	M6	11	1,6
1896-0800	1	M8	15	1,6

### Ball end RH thread



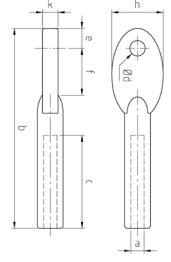
316 Outdoor satin		A	B	C	Ød1
1898-0600-01	1	M6	18,8	10	20
1898-0800-01	1	M8	22,4	12	24

Eye internal thread RH



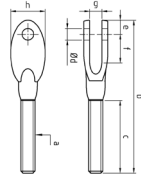
316 Outdoor satin		A	B	C	Ød	E	F
1906-0600	1	M6	78	40	6	8	19
1906-0800	1	M8	78	40	6	8	19

Eye internal thread LH



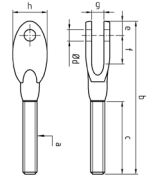
316 Outdoor satin		A	B	C	Ød	E	F
1907-0600	1	M6	78	40	6	8	19
1907-0800	1	M8	78	40	6	8	19

Fork external thread RH



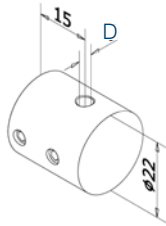
316 Outdoor satin		A	B	C	Ød	E	F
1945-0600	1	M6	77	35	6	7,5	14
1945-0800	1	M8	77	35	6	7,5	14

Fork external thread LH



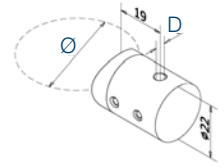
316 Outdoor satin		A	B	C	Ød	E	F
1946-0600	1	M6	77	35	6	7,5	14
1946-0800	1	M8	77	35	6	7,5	14

Cable holder 22mm, flat



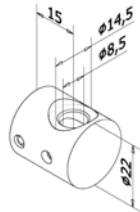
316 Outdoor satin		D
0704.000.316	8	4mm
0705.000.316	8	5mm
0706.000.316	8	6mm

Cable holder 22mm, tube



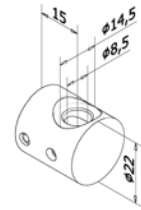
316 Outdoor satin		D	Ø
0704.424.316	8	4mm	42,4
0704.483.316	8	4mm	48,3
0705.424.316	8	5mm	42,4
0705.483.316	8	5mm	48,3
0706.424.316	8	6mm	42,4
0706.483.316	8	6mm	48,3

Cable holder 22mm, flat - end left



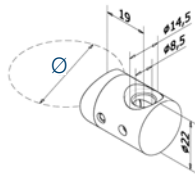
316 Outdoor satin	
0720.000.316	8

Cable holder 22mm, flat - end right



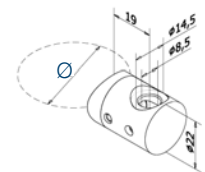
316 Outdoor satin	
0725.000.316	8

Cable holder 22mm, tube - end left



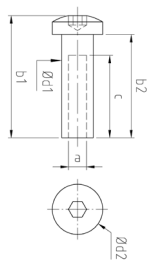
316 Outdoor satin		Ø
0720.424.316	8	42,4
0720.483.316	8	48,3

Cable holder 22mm, tube - end right



316 Outdoor satin		Ø
0725.424.316	8	42,4
0725.483.316	8	48,3

End stop internal thread



316 Outdoor		A	b1	b2	C	Ød1	Ød2
I869-0600-02	1	M6	35	30	20	8	14
I869-0800-02	1	M8	40	34	25	10	16