

Kensington
Balustrade
Systems

UNIQ
SMART BALUSTRADES

UNIQ
SB-O2

a smart balustrade masterpiece



KM 686207
BS 6180:2011



bimobject®



UNIQ

the smartest profile for glass balustrades

The new generation of glass balustrade profiles isn't just called UNIQ. The patented clamping of the glass without wedges and rubbers, the adjustability on rough surfaces, the hollow design and the quick and easy assembly are all unique and smart characteristics that save time and money.

UNIQ provides the perfect profile for any balustrade. Suitable for assembly on or against the floor, for finished or rough concrete, steel or wood floors, and for line loads of 0.36, 0.74, 1.5 and 3kN/m.

The detailed information in this brochure is also available on the website www.uniq-balustrades.com

UNIQ profiles are an innovation from SB-Railing, part of IMS Nederland. Since 1954, this company has been providing semi-manufactured steel, stainless steel and aluminum products.

www.ims-nederland.biz

IMS Nederland B.V. is
ISO 9001:2008 and CE certified.



TESTS | CERTIFICATIONS

UNIQ profiles have been tested by BSI



KM 686207
BS 6180:2011



Kitemark™ Certificate



This is to certify that:

IMS Nederland B.V.
Gildenweg 21
3334 KC Zwijndrecht
The Netherlands

Holds Certificate Number:

KM 686207

In respect of:

BS 6180:2011
Protective Barrier Systems constructed from metal and glass

This issues the right and licence to use the Kitemark in accordance with the Kitemark Terms and Conditions governing the use of the Kitemark, as may be updated from time to time by BSI Assurance UK Ltd (the "Conditions"). All defined terms in this Certificate shall have the same meaning as in the Conditions.

The use of the Kitemark is authorized in respect of the Product(s) detailed on this Certificate provided at or from the above address.

Chris Lewis - Certification Director, Product Certification

For and on behalf of BSI:

First Issued: 2018-08-23
Latest Issue: 2018-08-23

Effective Date: 2018-08-23
Expiry Date: 2021-08-22

Page: 1 of 2



...making excellence a habit™

This certificate has been issued by and remains the property of BSI Assurance UK Ltd, Kitemark Court, Davy Avenue, Knowlhill, Milton Keynes MK5 8PP, United Kingdom and should be returned immediately upon request. To check its validity telephone +44 (0) 345 080 9000. An electronic certificate can be authenticated [online](#).

BSI Assurance UK Limited, registered in England under number 7805321 at 389 Chiswick High Road, London W4 4AL, UK. A member of BSI Group of Companies.

Kitemark™ Certificate

No. KM 686207

BS 6180:2011 - Barriers in and about buildings.

This certificate covers the following barrier systems

System	Suitability/Duty Rating
SB-O 0.5S	BSI report ref. 8871705
SB-O 1S	BSI report ref. 8871705
SB-O 1	BSI report ref. 8871705
SB-O 2	BSI report ref. 8871705
SB-O 3	BSI report ref. 8871705
SB-A 1	BSI report ref. 8871705
SB-A 2	BSI report ref. 8871705
SB-A 3	BSI report ref. 8871705

First Issued: 2018-08-23
Latest Issue: 2018-08-23

Effective Date: 2018-08-23
Expiry Date: 2021-08-22

Page: 2 of 2

This certificate has been issued by and remains the property of BSI Assurance UK Ltd, Kitemark Court, Davy Avenue, Knowlhill, Milton Keynes MK5 8PP, United Kingdom and should be returned immediately upon request. To check its validity telephone +44 (0) 345 080 9000. An electronic certificate can be authenticated [online](#).

BSI Assurance UK Limited, registered in England under number 7805321 at 389 Chiswick High Road, London W4 4AL, UK. A member of BSI Group of Companies.



UNIQUE CLAMPING STRIP

The patented, continuous clamping strip makes the UNIQ system truly unique. With this clamping strip, the way the glass is held in place is substantially different from other systems, which brings significant benefits.



UNIQUE IN MOUNTING AND POSITIONING POSSIBILITIES

The assembly is also unique. In addition to structural anchors, the profiles are mounted with a second row of anchors so that it can be leveled. Because the inside of the profile is square, the glass will stand straight. The glass is completely and evenly clamped with the patented clamping strip, which avoids high tension in the glass. By adjusting the set / locking bolts of the clamping strip, small deviations in the position or thickness of the glass can be solved.

DOUBLE SAFETY

The continuous clamping strip is secured in two places. Cogging on both the clamping strip and the profile works as the first locking. The tightening of the specially designed bolts ensures the second locking. The glass is now safely secured and can't come loose.

Gently tapping the clamping strip



**SAFETY COMBINED WITH
EASY MOUNTING:
THAT'S UNIQ**

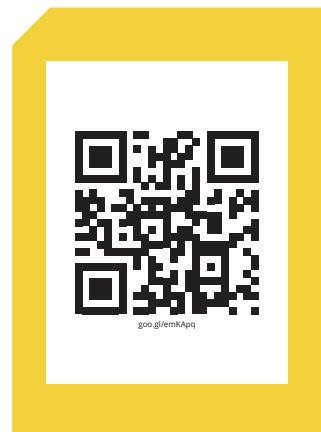


By adjusting the set / locking bolts of the clamping strip, small deviations in the position or thickness of the glass can be solved.



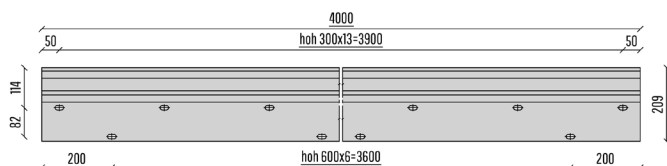
The continuous clamping strip is clearly visible

MOUNTING UNIQ STEP BY STEP



Check the instruction video

UNIQ SB-02 | TOP MONTAGE 1.5 KN



BASE PROFILE

- 2089514 SB-O2 Brute
- 2089516 SB-O2 Stainless look

L
4000 mm
4000 mm

GLASS MOUNTING SET (GMS)

- 2028356 GMS-L2 - 12/12/pvb
- 2028588 GMS-XXL3 - 10/10/pvb
- 2028588 GMS-XXL3 - 19

L
4000 mm
4000 mm
4000 mm

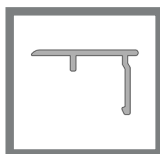
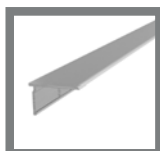
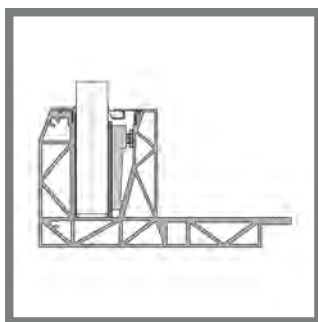
Content:
Clamping strip + glass blocks + required packing

REAR COVER

- | | | B | L |
|---------|--------------------------------------|----|---------|
| 2089106 | CR-XL1 - 12/12/pvb - Brute | 25 | 4000 mm |
| 2089359 | CR-XL1 - 12/12/pvb - Stainless look | 25 | 4000 mm |
| 2089620 | CR-XXL3 - 10/10/pvb - Brute | 31 | 4000 mm |
| 2089622 | CR-XXL3 - 10/10/pvb - Stainless look | 31 | 4000 mm |
| 2089620 | CR-XXL3 - 19 - Brute | 31 | 4000 mm |
| 2089622 | CR-XXL3 - 19 - Stainless look | 31 | 4000 mm |

OPTIONAL FOR REAR COVER

- | | | L |
|---------|---------------------------|---------|
| 1012309 | Rubber for the cover rear | 1000 mm |



FRONT COVER

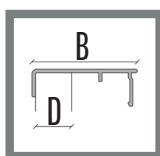
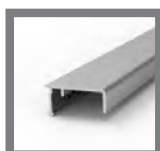
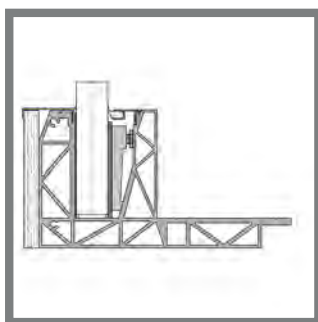
- 2089096 CF-300 Brute
2089354 CF-300 Stainless look

L
4000 mm
4000 mm

OPTIONAL FOR FRONT COVER

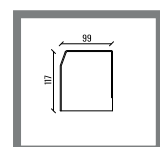
- 1012311 Rubber for the cover front

L
1000 mm



PLATING COVERS

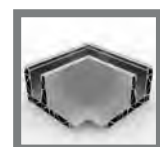
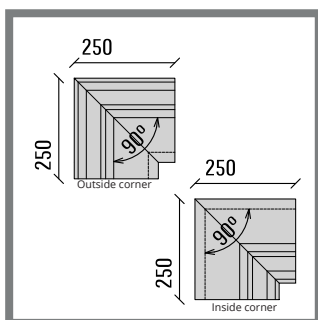
		D	B	L
2089098	CF-303 Brute	3	35	4000 mm
2089355	CF-303 Stainless look	3	35	4000 mm
2089100	CF-312 Brute	12	44	4000 mm
2089356	CF-312 Stainless look	12	44	4000 mm
2089102	CF-320 Brute	20	52	4000 mm
2089357	CF-320 Stainless look	20	52	4000 mm



END COVERS

- 2090564 SB-O2 end cover left, Brute
2090554 SB-O2 end cover left, Stainless look
2090569 SB-O2 end cover right, Brute
2090559 SB-O2 end cover right, Stainless look

Small color differences between end caps and profiles are possible.



CORNER PIECES

- 2090632 SB-O2 Outside corner Brute
2090631 SB-O2 Outside corner Stainless look

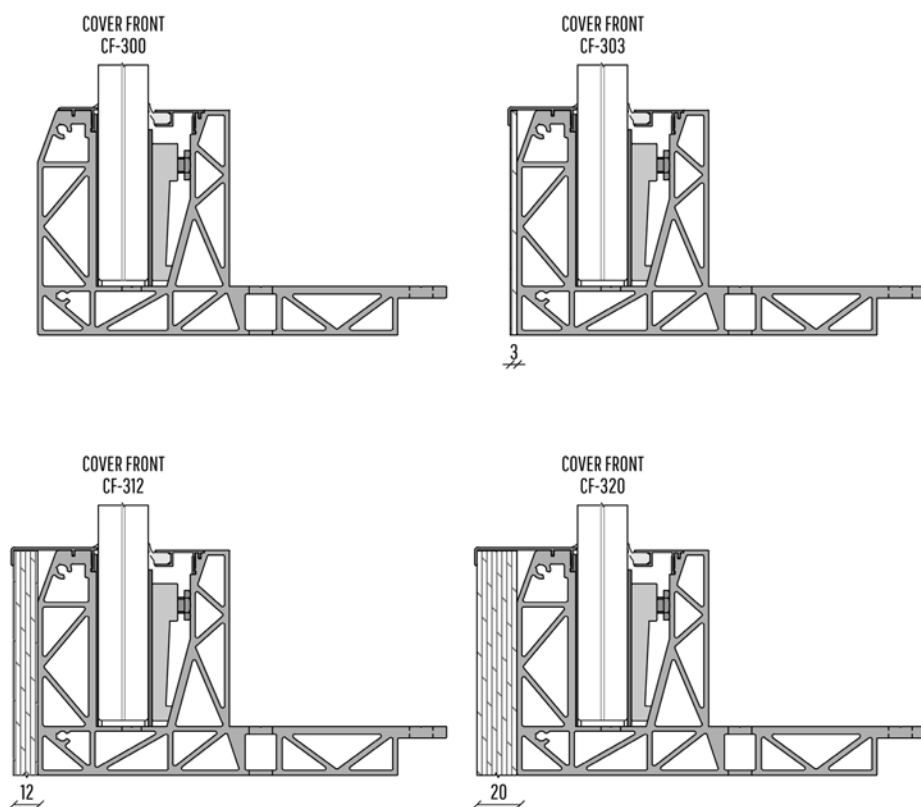
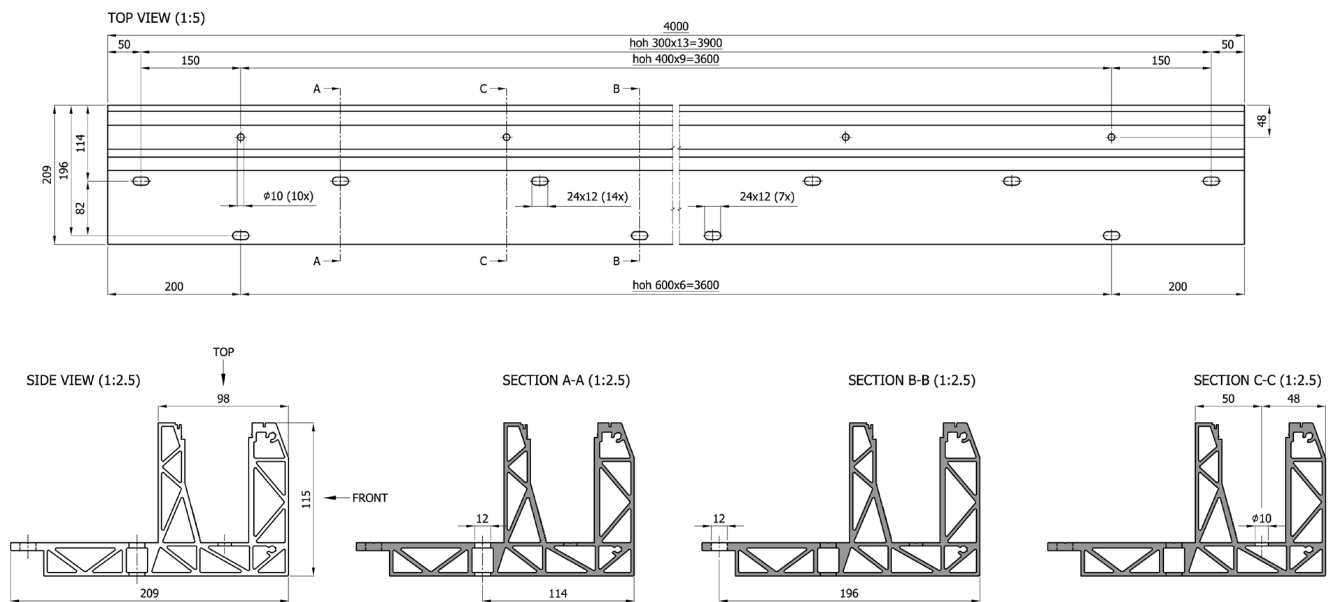
2090630 SB-O2 Inside corner Brute
2090493 SB-O2 Inside corner Stainless look

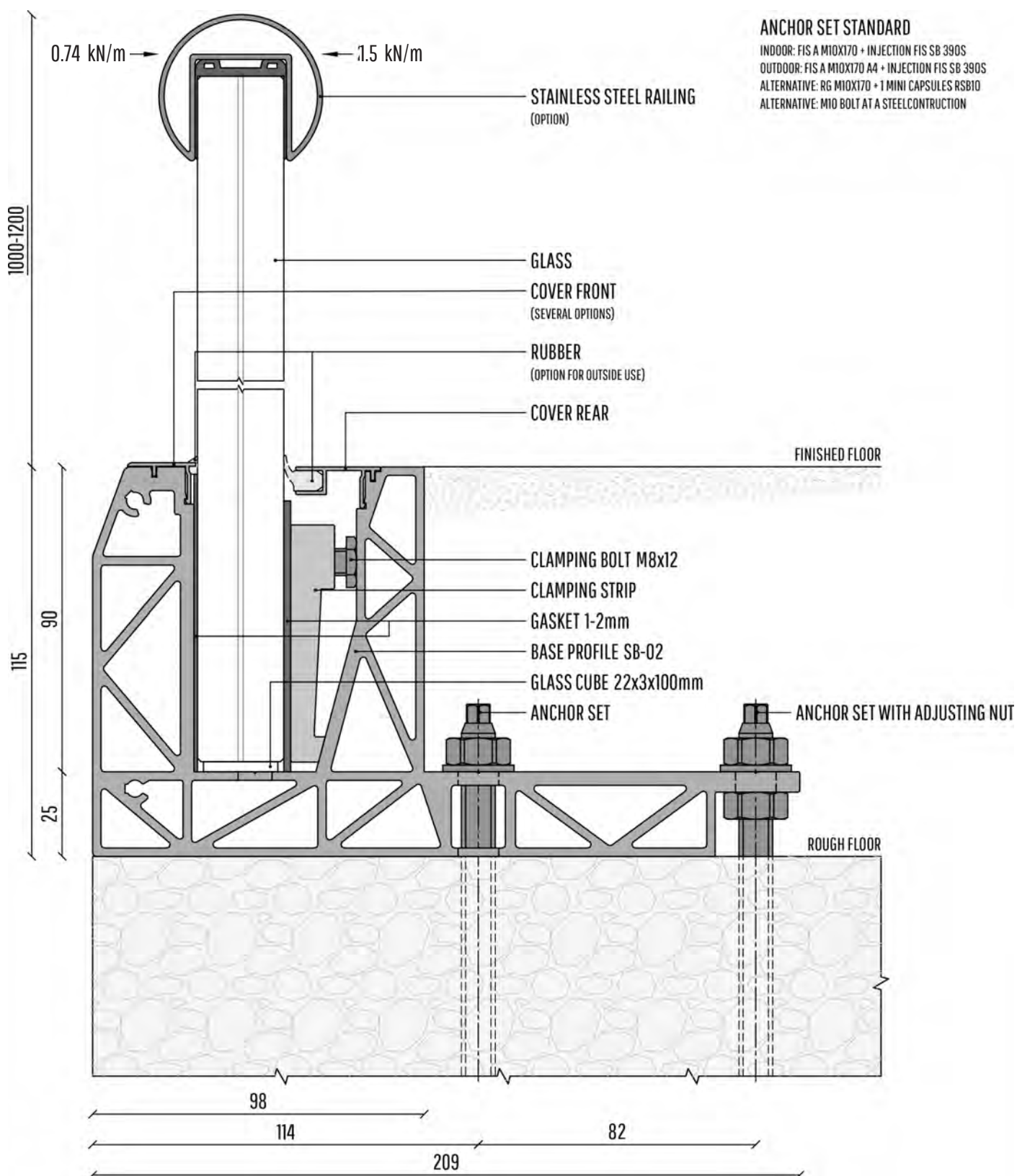


ANCHOR SB-O2

- 2008327 FISCHER injection mortar SB 390 S
2089149 FISCHER RSB 10 MINI capsule (alternative)
2089819 FISCHER RGM 10x170 Threaded rod indoor
2089820 FISCHER RGM 10x170 Threaded rod A4 outdoor

UNIQ SB-02 | INFO





MOUNTING TOOLS



TAPPING TOOL

2089137 Tapping tool



MOUNTING WRENCH

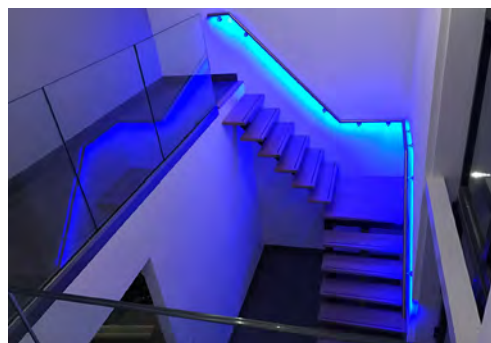
2089138 Mounting wrench



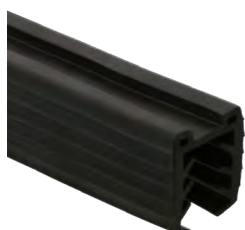
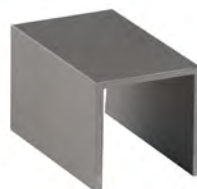
CONNECT PIN

2089139 Connect pin

FOR THESE PROJECTS UNIQ IS CHOSEN!



ALSO AVAILABLE



WWW.SB-RAILING.COM



KENSINGTON TRADERS LIMITED
23-25 RIBOCON WAY
PROGRESS PARK, LUTON,
BEDFORDSHIRE LU4 9UR, UK
T: 01582 563 794
WWW.BALUSTRAD-SYSTEMS.COM

Kensington
Balustrade
Systems

UNIQ
SMART BALUSTRADES

SEPTEMBER 2020
ENGLISH
WWW.UNIQ-BALUSTRADES.COM