

Aluminium Glass Post System

△ *The Aluminum Glass Post System is designed with a charming and appealing appearance, durability and quality.*

△ *Easily installed, low maintenance and lasting performance, complete with impeccable customer service support.*

Key Features:

Hidden fasteners, no welds, no rivets

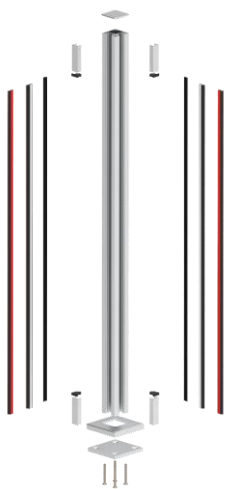
Assembly is fast and easy

For 10mm and 11.52mm Glass

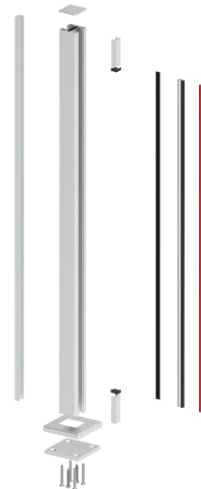
Satin anodised

Quality aluminum construction

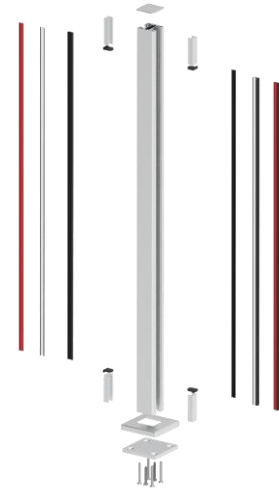
Line load up to 1.5 kN/m



End Post



Mid Post



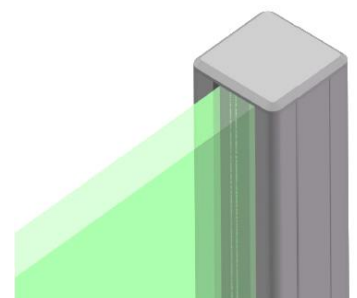
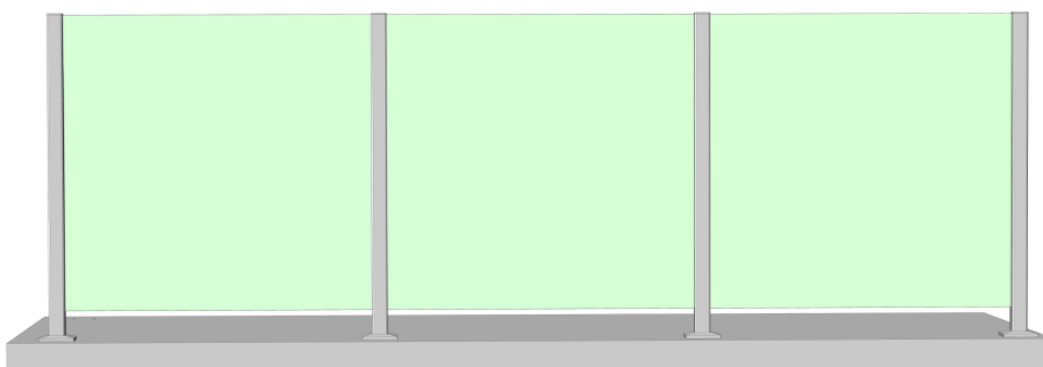
90 Degree Post

ALUMINIUM POST

| Product Code | Position | Height | Glass | Finish |
|-----------------|----------------|--------|----------------|----------------|
| AP1001-SQ-SATIN | End Post | 1100mm | 10mm / 11.52mm | Satin Anodised |
| AP1002-SQ-SATIN | Mid Post | 1100mm | 10mm / 11.52mm | Satin Anodised |
| AP1003-SQ-SATIN | 90 Degree Post | 1100mm | 10mm / 11.52mm | Satin Anodised |

Each kit includes: Post, base/cover, top cap, rubber strips and other accessories.

Glass Panel and tools not included



Aluminium Glass Post System

△ *The Aluminum Glass Post System is designed with a charming and appealing appearance, durability and quality.*

△ *Easily installed, low maintenance and lasting performance, complete with impeccable customer service support.*

Key Features:

Hidden fasteners, no welds, no rivets

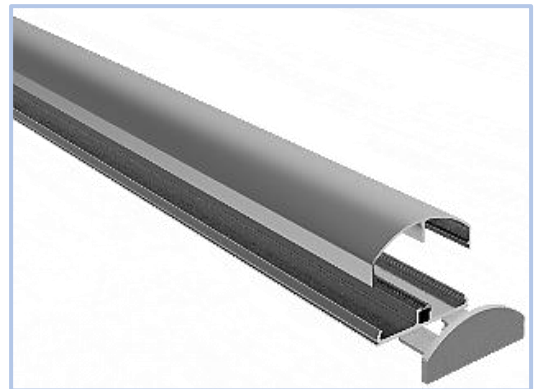
Assembly is fast and easy

For 10mm and 11.52mm Glass

Satin anodised

Quality aluminum construction

Line load up to 1.5 kN/m



ALUMINIUM TOP RAIL & COMPONENTS

| Product Code | Description | Size | Finish | Length |
|-----------------|-------------|---------|----------------|--------|
| AP1004-TOP-RAIL | TOP RAIL | 65x25mm | Satin Anodised | 3000mm |
| AP-END-CAP | END CAP | 65x25mm | Satin Anodised | / |
| AP-WALLPLATE | WALL PLATE | 65x25mm | Satin Anodised | / |

TOP RAIL INSTALLATION TOOL

Product Code

AP-INSTALLATION-TOOL

Particularly designed for installing the top rail fast and easy

