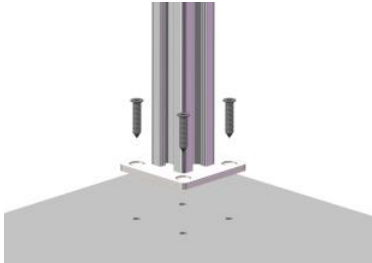


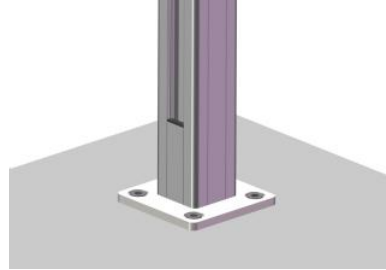
INSTRUCTION SHEET

ALUMINIUM GLASS POSTS WITH HANDRAIL

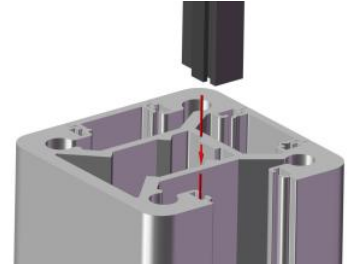
Step 1. Tighten post to deck by screws through the holes dig in advance.



Step 2. Install the bottom infill and rubber block.



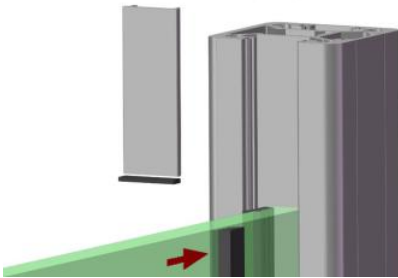
Step 3. Install and insert the outside rubber strip along the slot on the post.



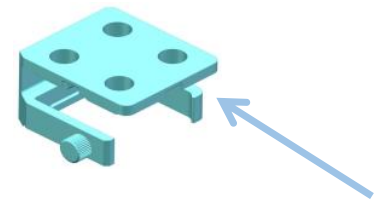
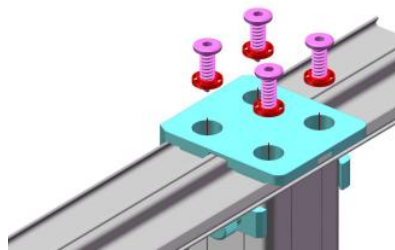
Step 4. Slide the glass panel from the side or top.

Step 5. Insert the inside rubber strip.

Step 6. Install the rubber block and top infill.

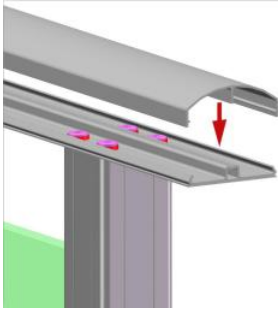


Step 7. Drill and screw the handrail to the post with the drilling tool (removed afterwards).

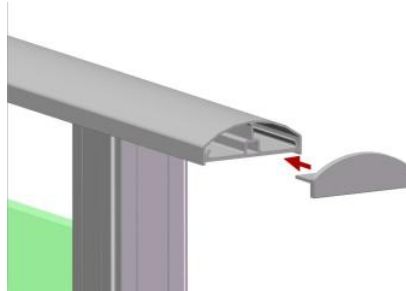


Drilling tool

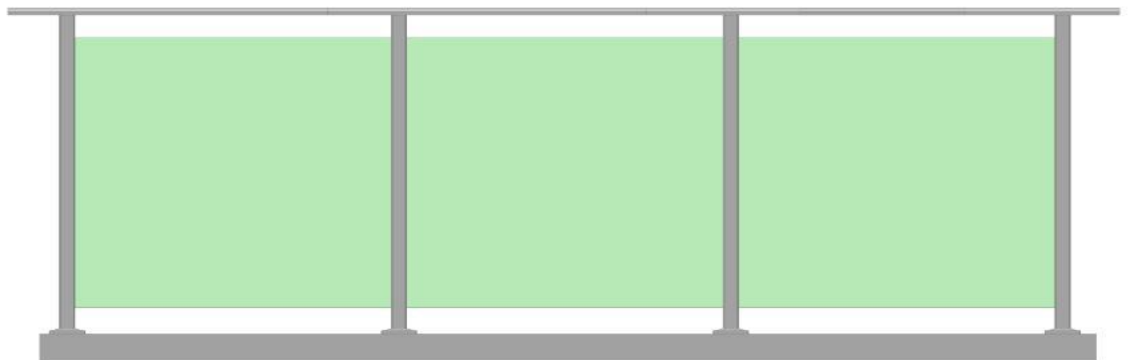
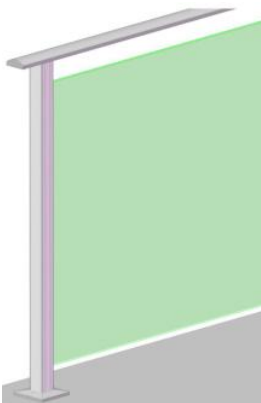
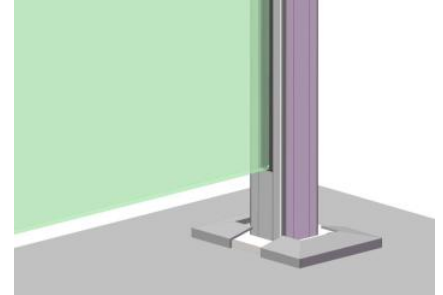
Step 8. Clip on the cap rail.



Step 9. Fit the end cap.

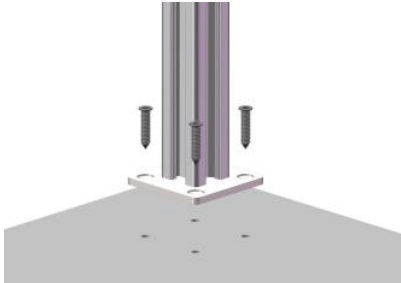


Step 10. Fit the cover plate.

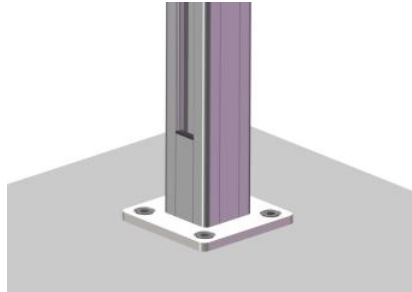


ALUMINIUM GLASS POSTS WITH CAP

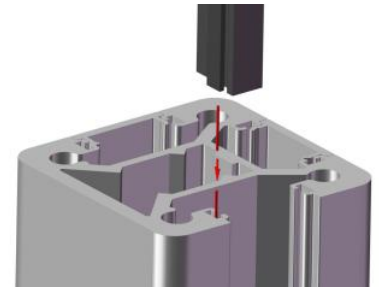
Step 1. Tighten post to deck by screws through the holes dig in advance.



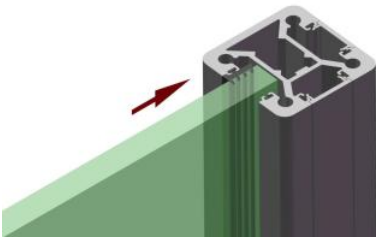
Step 2. Install the bottom infill and rubber block.



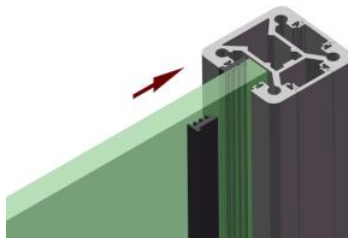
Step 3. Install and insert the outside rubber strip along the slot on the post.



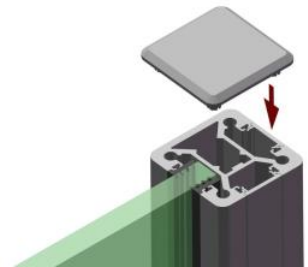
Step 4. Slide the glass panel from the side or top.



Step 5. Insert the inside rubber strip.



Step 6. Place the cap in position.



Step 7. Fit the cover plate.

