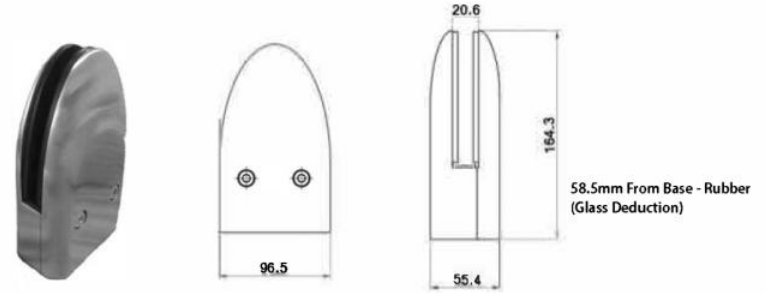
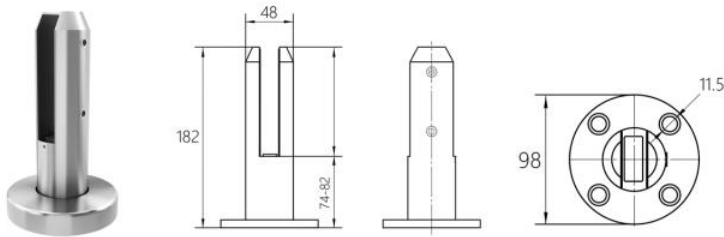


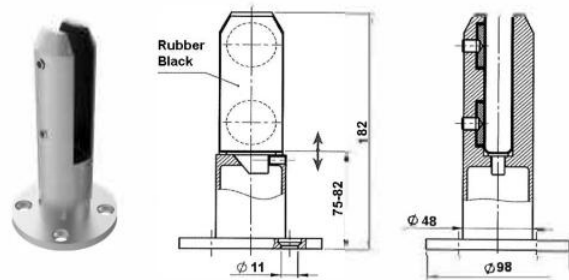
**GLH1080**  
**Round Spigot & Base (Rubbers for 10 and 12mm)**  
**316G Satin**



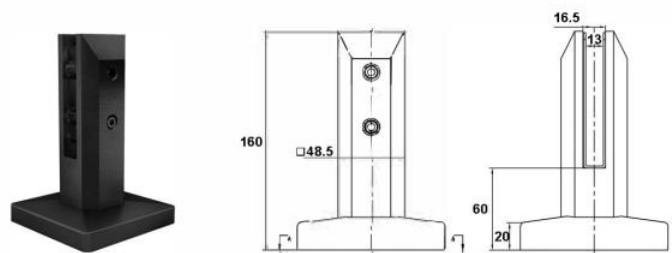
**GLH1081**  
**Novo Spigot (12mm Glass)**  
**316G Satin**



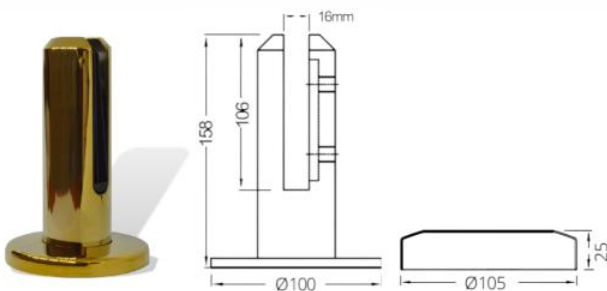
**0397.000.225**  
**Stainless Steel Duplex 2205 Round Spigot**  
**Available in Satin Finish & Black Finish**  
**To Suit 13.52 - 17.52mm Glass**



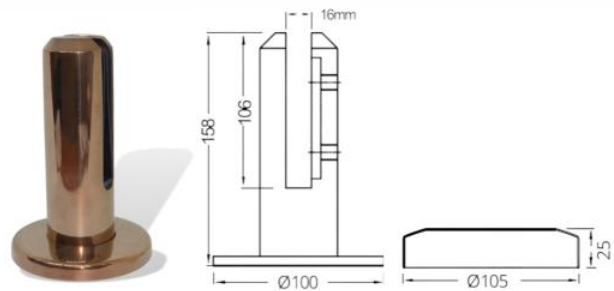
**GLH1082**  
**Round Spigot (Cover Available) 316G Satin**  
**To Suit 12-17.52mm Glass**



**KT-Spigot-Black**  
**PVD Coated Black Spigot**  
**To Suit 10-12mm Glass**

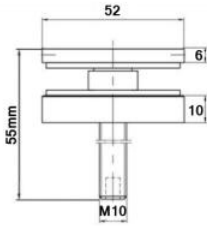


**GLH1084-GOLD**  
**To Suit 10-12mm Glass**  
**Round - 316 Grade Stainless Steel**



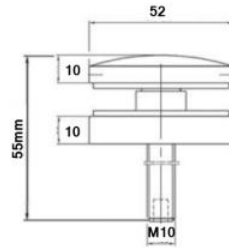
**GLH1084-ROSE-GOLD**  
**To Suit 10-12mm Glass**  
**Round - 316 Grade Stainless Steel**

20, 30, 40, & 50mm Spacers Now Available for JK-1014 & JK-1017 Satin & Mirror Finish

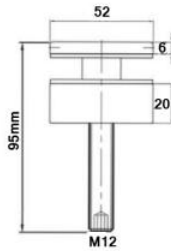


**JK-1014**  
Solid Threaded Body – Flat Head  
M10 Removable Thread  
304/316

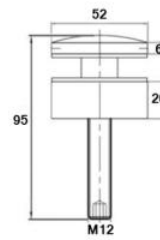
\*150mm Long M10 Threaded Bar Also Available Upon Request



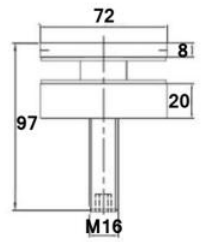
**JK-1017**  
Solid Threaded Body – Convex Head  
M10 Removable Thread  
304/316



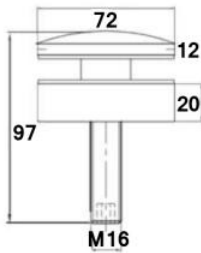
**JK-1015**  
Solid Threaded Body – Flat Head  
M12 Removable Thread  
304/316



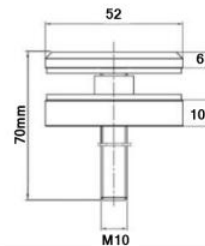
**JK-1018**  
Solid Threaded Body – Convex Head  
M12 Removable Thread  
304/316



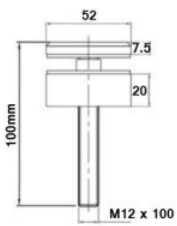
**JK-1016**  
Solid Threaded Body – Flat Head  
M16 Removable Thread  
304/316



**JK-1019**  
Solid Threaded Body – Convex Head  
M16 Removable Thread  
304/316



**JK-1012**  
Solid Threaded Body – Screw Head  
M10 Removable Thread  
304/316



**JK-1013**  
Solid Threaded Body – Screw Head  
M12 Removable Thread  
304/316

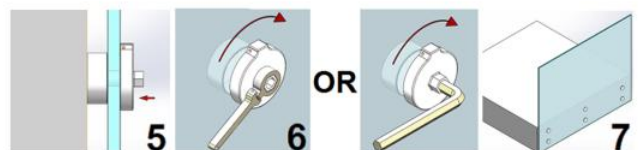
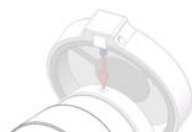
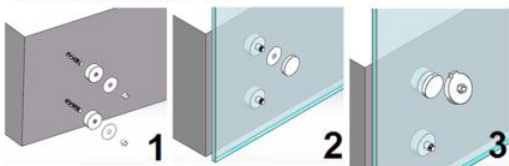
**Spanners Available:**

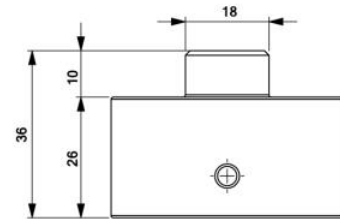
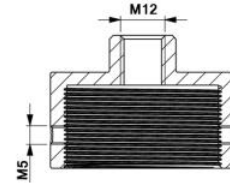
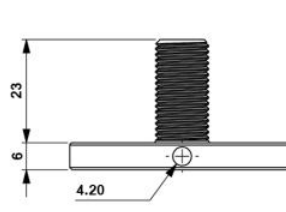
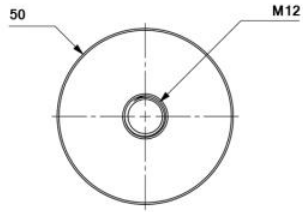
- JK-Spanner-52
- JK-Spanner-72
- JK-Spanner-Adjustable (30-72mm)
- JK-Flexible-Spanner (52mm Wide)



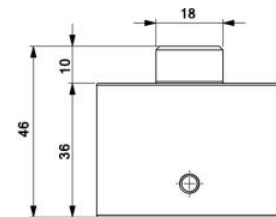
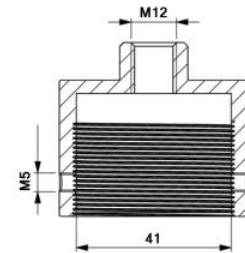
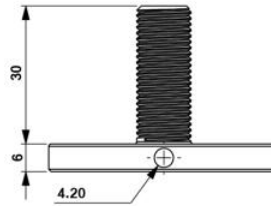
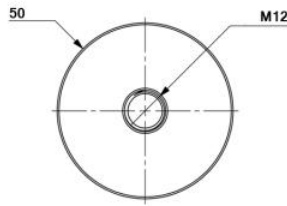
JK-Flexible-Spanner  
(Suitable for 52mm Wide JKs)

**JK-Flexible-Spanner:**

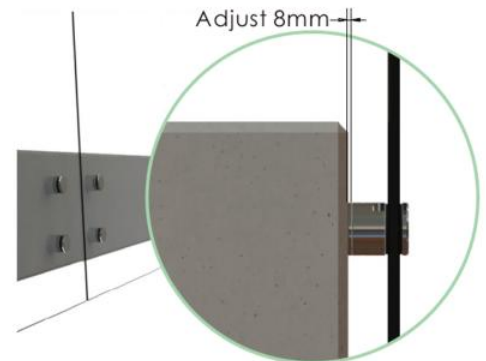
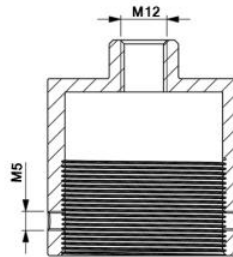
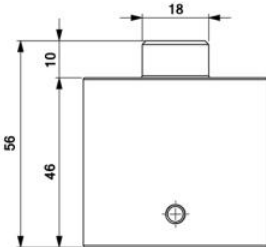




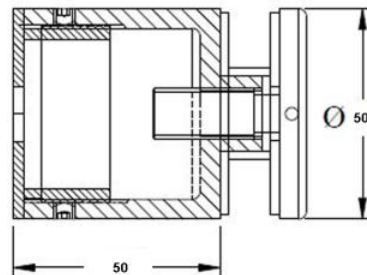
**KT-ADJ-STAND-30**  
Adjustable Stand-Off, Satin or Mirror  
W 50mm x L 30mm 10-21.52mm Glass  
Duplex 2205



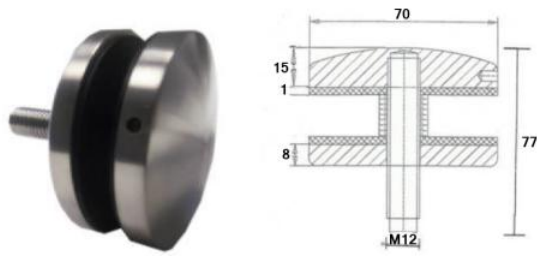
**KT-ADJ-STAND-40**  
Adjustable Stand-Off, Satin or Mirror  
W 50mm x L 40mm 10-21.52mm Glass  
Duplex 2205



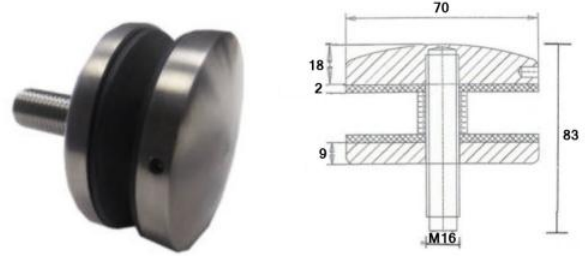
**KT-ADJ-STAND-50**  
Adjustable Stand-Off, Satin or Mirror  
W 50mm x L 50mm 10-21.52mm Glass  
Duplex 2205



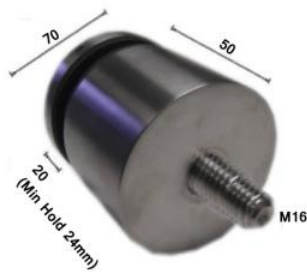
**KT-ADJ-STAND-BLACK-50**  
Adjustable Stand-off  
Black Finish  
W 50mm x L 50mm 10-21.52mm Glass



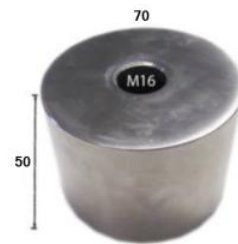
**GLH1070-M12**  
70mm Face - M12 Removable Thread  
316



**GLH1070-M16**  
70mm Face - M16 Removable Thread  
316



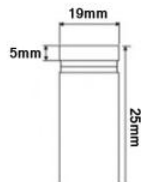
**GLH1070-M16 - Glass Retainer 304/316**  
**GLH1070-M16-EXT316 - Glass Retainer 304/316**



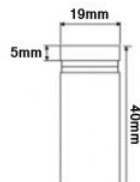
**GLH1070-M16-EXT316**  
50 x 70 x M16  
(Spacer Only)  
304/316



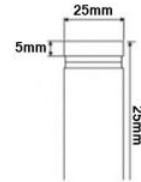
**••Brand New••**  
**Stand-Offs for Signs**  
19mm and 25mm Width  
25mm and 40mm Off-Set



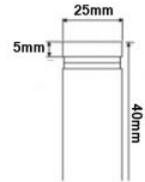
**KT-Sign-19x25mm**  
304G, Satin



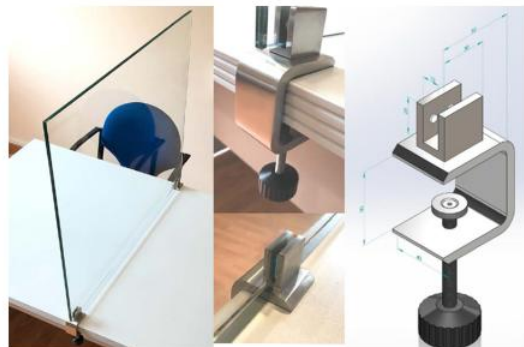
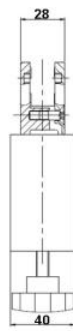
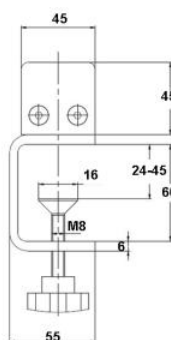
**KT-Sign-19x40mm**  
304G, Satin



**KT-Sign-25x25mm**  
304G, Satin

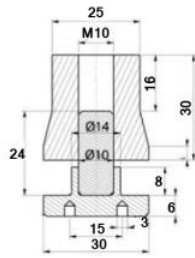


**KT-Sign-25x40mm**  
304G, Satin

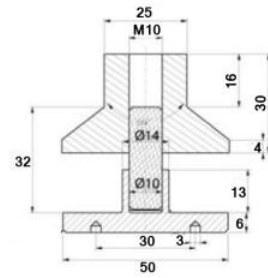


**KT-Sneeze-Screen-Clamp**  
304 Grade To Suit 6 / 8 / 10mm Glass

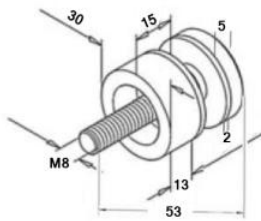
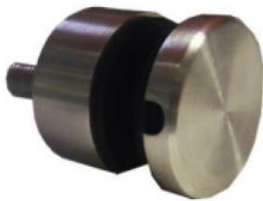




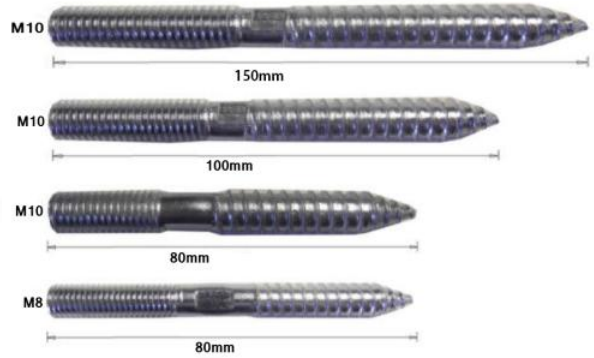
**GLH1013K-30**  
Solid Threaded Body – Pig Nose  
M10 Removable Thread  
316



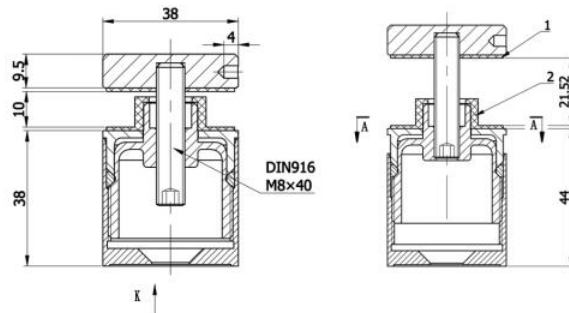
**GLH1013K-50**  
Solid Threaded Body – Pig Nose  
M10 Removable Thread  
304/316



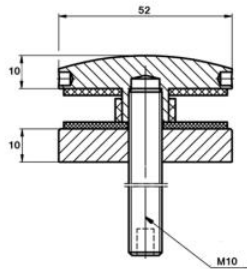
**GLH1014K**  
Flat Face Glass Retainer  
316



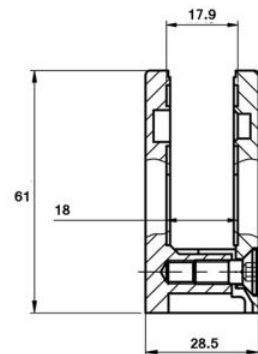
**M10-Dowel-150mm**  
**M10-Dowel100**  
**M10-Dowel80**  
**M8-80-Dowel**



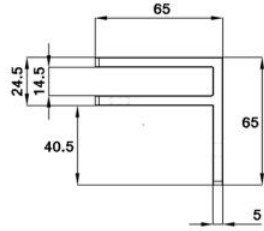
**KT-SELF-LOCK-STAND-OFF**  
316 Grade Stainless Steel  
Available in Satin & Mirror  
38 x 38 - 44mm



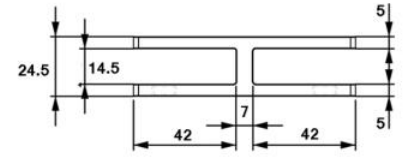
**JK-1017-Black**  
316 Grade – Black Finish  
Stand Offs



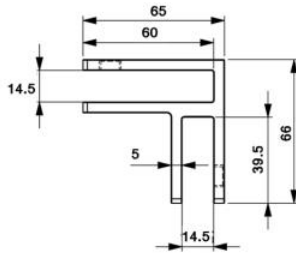
**KLH10F-Black**  
316 Grade – Black Finish  
Flat Back Glass Clamp – 10mm Rubbers Included



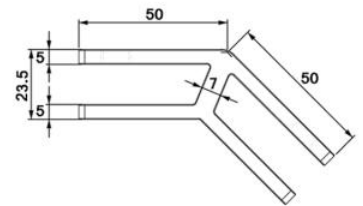
**KLH10-STIFF-WALL**  
Duplex Stainless - Satin Finish  
10-12mm Wall to Glass Stiffener



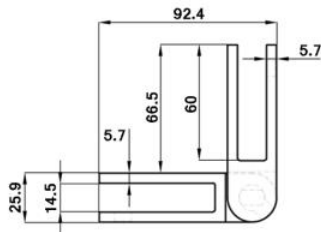
**KLH10-STIFF-180**  
Duplex Stainless Steel - Satin Finish  
10-12mm 180 Degree Glass Stiffener



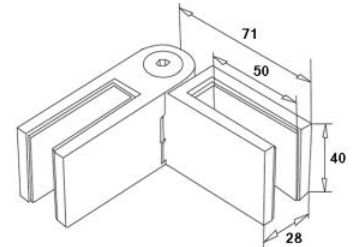
**KLH10-STIFF-90**  
Duplex Stainless - Satin Finish  
10-12mm 90 Degree Glass Stiffener



**KLH10-STIFF-135**  
Duplex Stainless - Satin Finish  
10-12mm 135 Degree Glass Stiffener



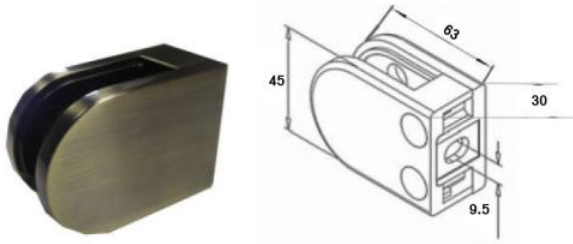
**KLH10-STIFF-ADJ**  
Duplex Stainless - Satin Finish  
10-12mm Adjustable Glass Stiffener



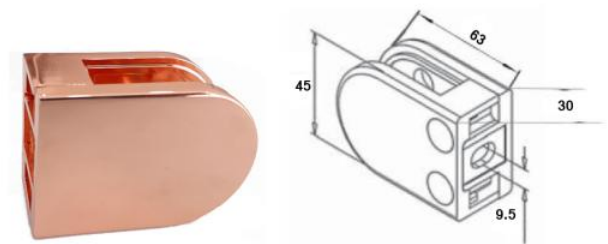
**KLH10-Adjustable**  
316 Grade - Satin Finish - 10-12mm Glass  
Adjustable Glass Clamp



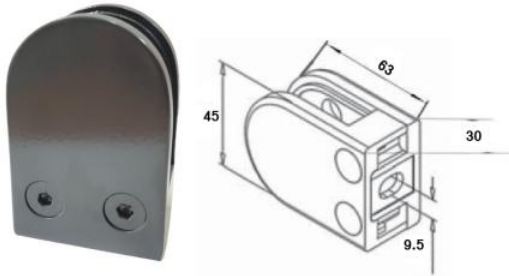
**\*\*BRAND NEW\*\***  
Large Stiffeners Now Available for 16.76mm - 19mm Glass  
316 Grade Satin Finish



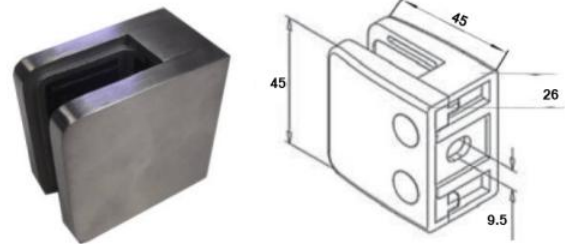
**KLH10F-ANT-BRASS**  
Powder Coated, Antique Brass Glass Clamp  
10mm Glass. 6/8/12mm Rubbers Also Available



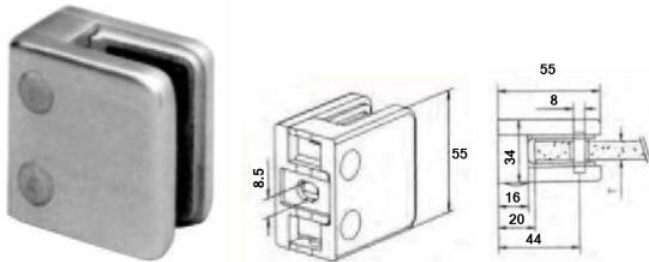
**KLH10F-ROSE-GOLD**  
Rose Gold Glass Clamp  
10mm Glass. 6/8/12mm Rubbers Also Available



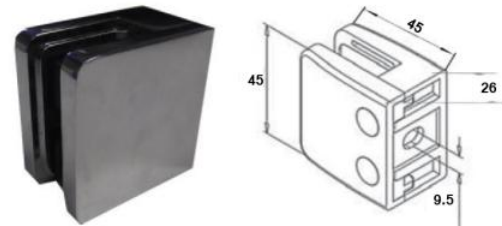
**KLH10F-GREY-ANTHRACITE**  
Powder Coated, Anthracite Grey Glass Clamp  
10mm Glass, 6/8/12mm Rubbers Also Available



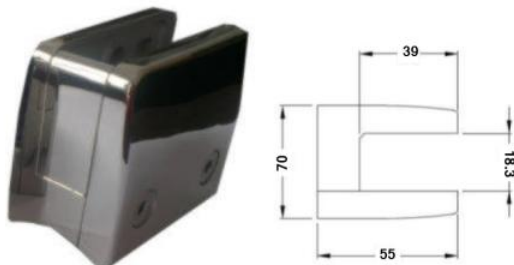
**KLH10F-45/45**  
Zintec Satin Effect / Zamack Mirror Effect  
45 x 45mm (No Pin)  
Internal Only



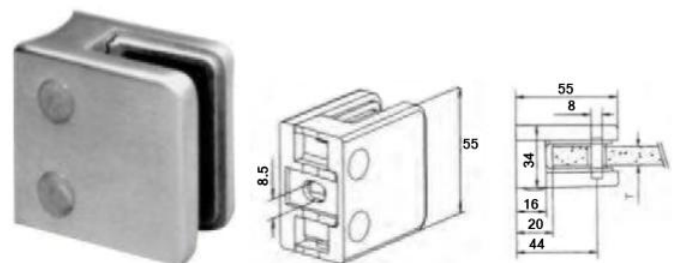
**KLH12F**  
304/316G Satin/Mirror  
Flat - Square 55 x 55mm  
304/316



**KLH10F-45/45**  
Satin Finish - 10mm Glass (No Pin)  
304

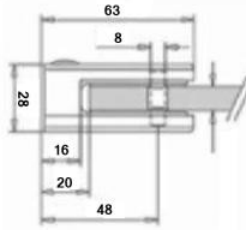
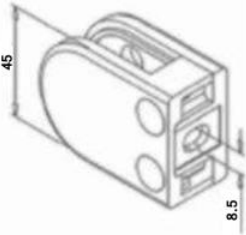


**KLH13.52-17.52FLAT**  
**KLH13.52-17.52R50.8**  
13.52 - 16.76 - 17.52mm Rubbers (Sold Separately)  
316G Mirror



**KLH12R-42MM**  
304G Satin  
Round - 12mm - Square 55 x 55mm  
304





KLH10F-K-304 - 304 Grade, Satin 6-12mm Glass  
 KLH10F-K - 316 Grade, Satin 6-12mm Glass  
 KLH10F/M - 304 Grade, Mirror 6-12mm Glass  
 KLH10F-K-316Mirror - 316 Grade, Mirror 6-12mm Glass  
 KLH10U-FK - Untreated 6-12mm Glass  
 KLH10Z-F-K - Zintec (Indoor) 6-12mm Glass  
 All clamps with 10mm rubbers included. 6,8 and 12mm rubbers sold separately



10mm Rubber

GLH1016-10mm-Rubber



12mm Rubber

GLH1016-12mm-Rubber



13.52mm

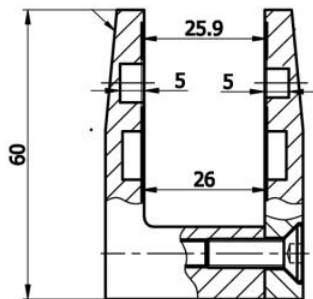
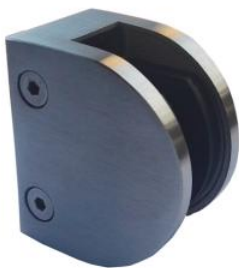


16.76mm



17.52mm

Rubbers for 70 x 50mm Clamps

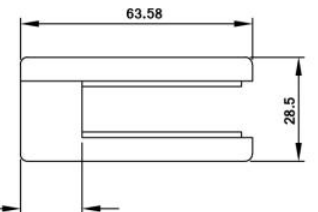
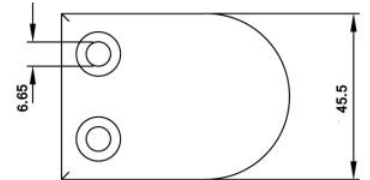


KLH21.5MM-F-316  
 Suitable For 15, 17.52, 19 and 21.52mm Glass  
 316 Grade, Satin / Mirror  
 60mm x 70mm

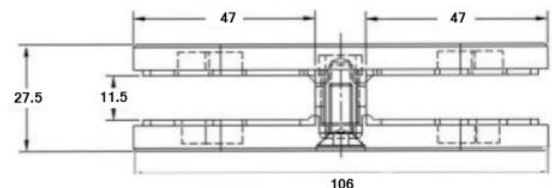
••New closed back Glass Clamp, for Welding



KLH10F-K-Closed  
 Closed back glass clamp  
 Suitable for 6, 8, 10 and 12mm Glass  
 316 Satin

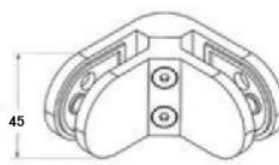
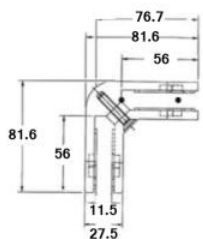


••See Dimensions Page 12



KLH21.5MM-R-316  
 Suitable for 15, 17.52, 19 and 21.52mm Glass  
 316 Grade, Satin / Mirror

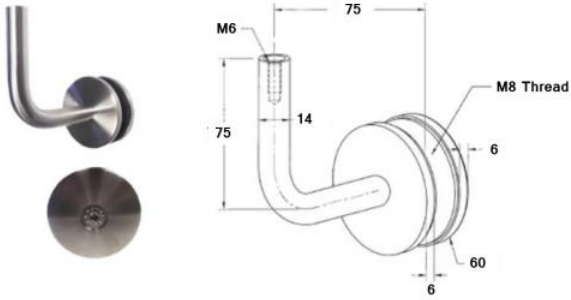
KLH10-180D  
 180 Degree Double Glass Clamp  
 Rubbers for 10 and 12mm Glass  
 316 Satin



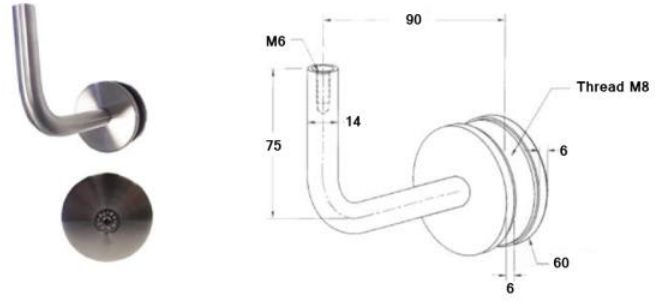
M8-ADJ-304/316  
 M8x20mmx304/316  
 M8x25mmx304/316

KLH10-90D  
 90 Degree Double Glass Clamp  
 Rubbers for 10 and 12mm Glass  
 316 Satin

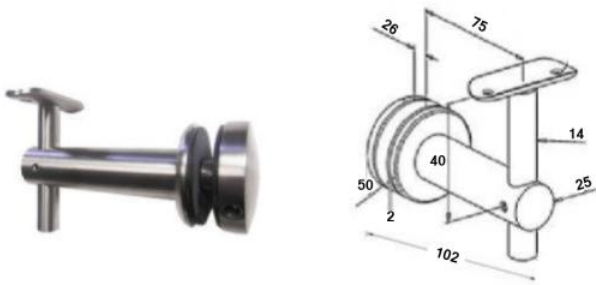




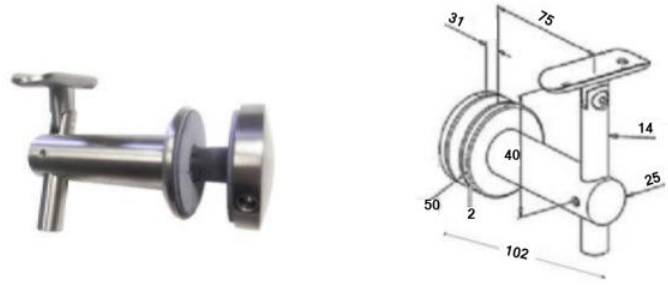
**HH1013-75**  
Glass Bracket and Rod  
304 / 316



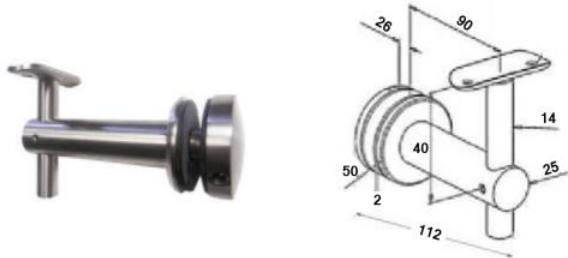
**HH1013-90**  
Glass Bracket and Rod  
304 / 316



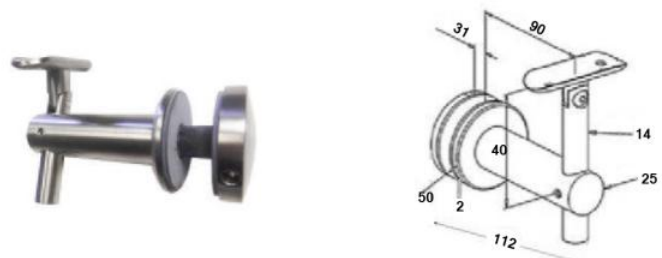
**HH1015K-75**  
Convex Head - Glass to Handrail  
304/316



**HH1015-75-ADJ**  
Convex Head - Glass to Handrail  
304/316



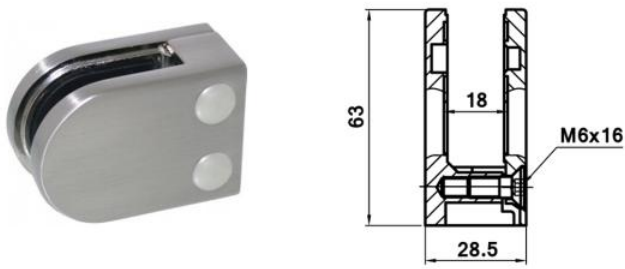
**HH1015K-90mm-50.8**  
Convex Head - Glass to Handrail  
304/316



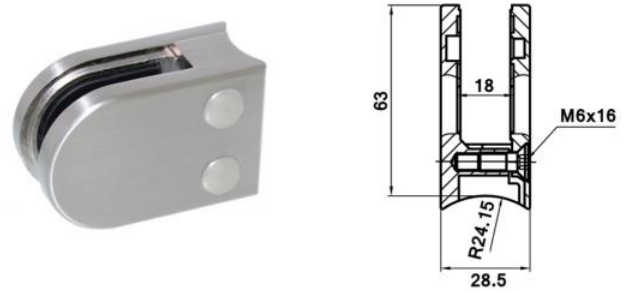
**HH1015-90-ADJ**  
Convex Head (Adjustable) - Glass to Handrail  
304/316



**KLH10F-Drop-Plate + KLH10R-Drop-Plate**  
Flat Post / 42.4mm Post / 48.3mm Post  
316 Grade Satin Finish  
40 x 18mm



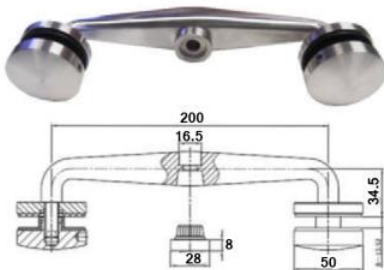
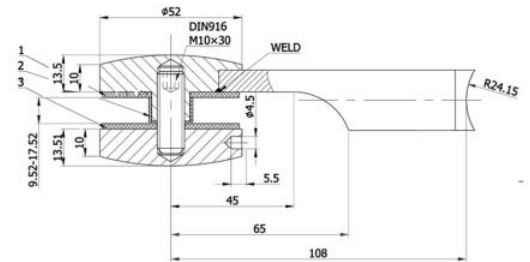
**KLH13.52-15MM-FLAT-SATIN**  
316 Grade Satin Finish  
Suitable for 13.52 and 15mm Glass



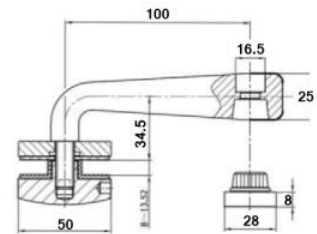
**KLH13.52-15MM-48.3-SATIN**  
316 Grade Satin Finish  
Suitable for 13.52 and 15mm Glass



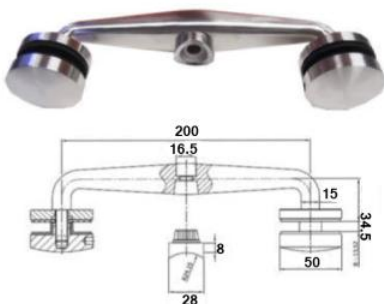
**JK-1025**  
316 Grade Satin Finish  
Available - Flat, 42.4mm, 48.3mm  
To Suit 10mm Glass



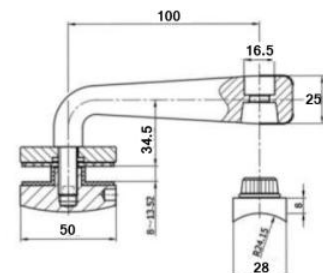
**GLH1030**  
Glass Retainer - Flat  
316



**GLH1032**  
Glass Retainer - Flat  
316



**GLH1031**  
Glass Retainer - 48/50mm Tube  
316

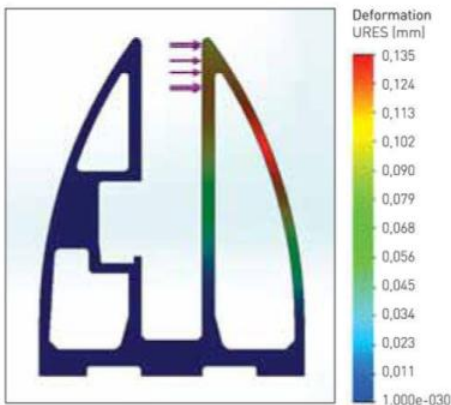


**GLH1033**  
Glass Retainer - 48/50mm Tube  
316



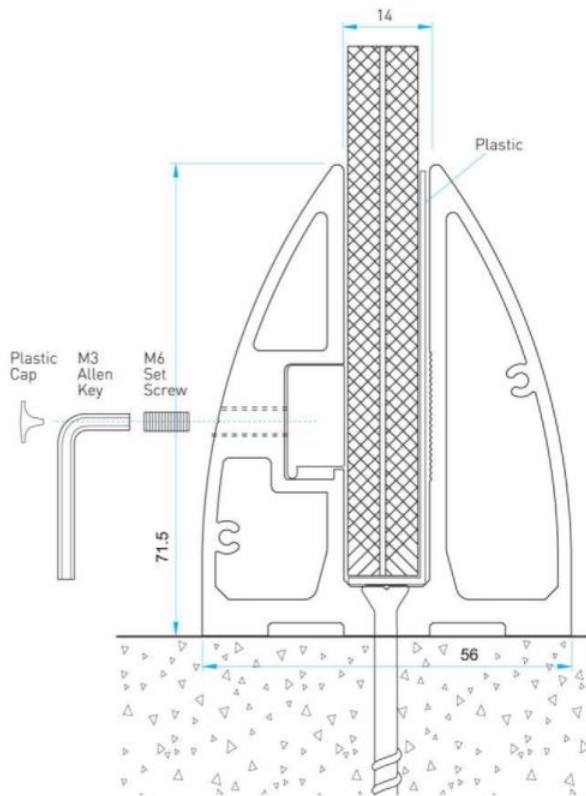
### KT-Parapet-Channel

Kensington's new parapet channel is the most economic of its type, which is suitable for 8, 10 and 12mm glass and is sold in 3m lengths. The glass is fixed with glass pressing a mechanism in the main profile. It provides aesthetic and sturdy results if it is supported with on-glass profiles connected to the wall.



Alloy EN AW 6063  
Stress and relocation results on 1 m. base profile with 350 kg horizontal load to the highest surface of the profile.

Mass : 2.77916 kg  
Volume : 0.00102932 m<sup>3</sup>  
Density : 2700 kg/m<sup>3</sup>  
Weight : 27.2358 N







KT-Parapet-Channel

7,5x120  
Torx Head Screw



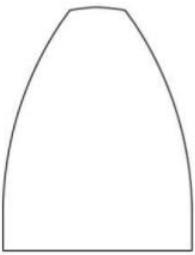
M6 Set Screw



Plastic Cap



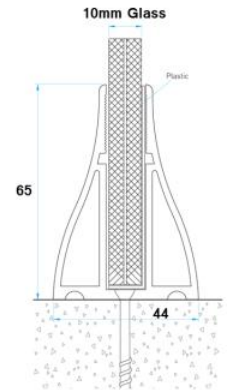
PVC Protection sheets



KT-Parapet-Ch-End  
End Cap to suit Parapet  
Channel (Ali)



KT-Glass-Aligner  
Glass Aligner – 60mm Wide  
10mm Plate / Ali 6063 T5



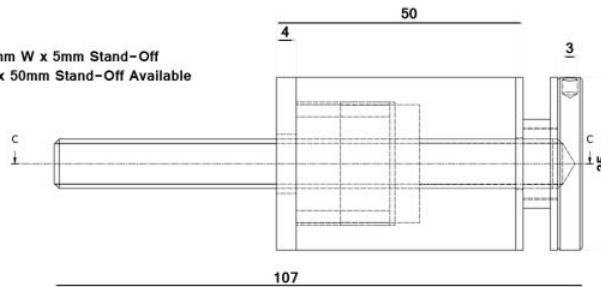
••Also available – Brand New S40E  
profile, for 10mm glass

New Glass Fittings

••Available with a flat face,  
or in 'Pig Nose'



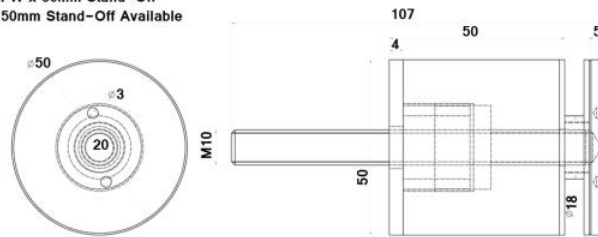
••Flat Face : 35mm W x 5mm Stand-Off  
and 50mm Wide x 50mm Stand-Off Available



Adjustable Back Plates on All Sizes



••Pig Nose : 35mm W x 50mm Stand-Off  
and 50mm Wide x 50mm Stand-Off Available



PVD Coated Stainless Steel

Available in; Black, Bronze and Brass finish / Adjustable Back Plate, 10mm Adjustment /  
Pig Nose or Side Hole / 30, 40 and 50mm / Suitable for 6–17.52mm Glass / Removable Thread



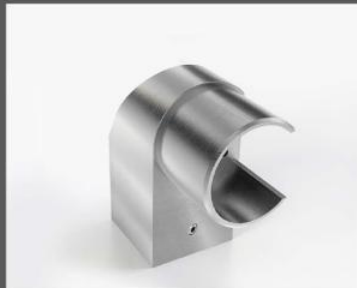
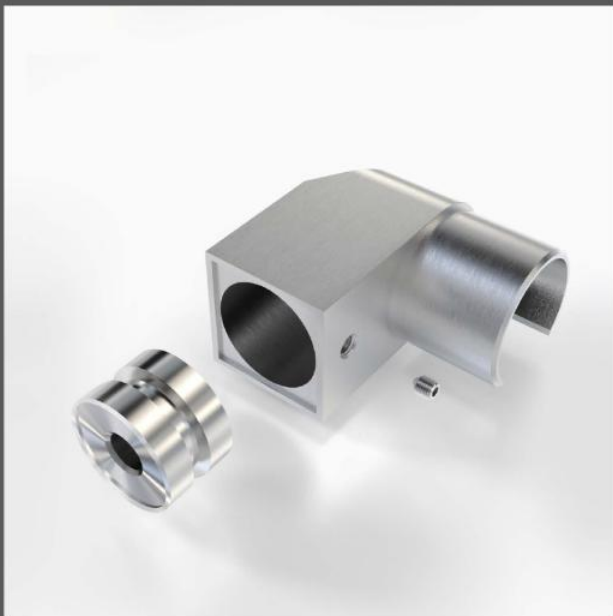
JK-1030 35mm Flat Face x 50mm Offset  
JK-1033 35mm Pig Nose x 50mm Offset  
JK-1050 50mm Flat Face x 50mm Offset  
JK-1053 50mm Pig Nose x 50mm Offset



JK-1031 35mm Flat Face x 50mm Offset  
JK-1051 50mm Flat Face x 50mm Offset  
JK-1054 50mm Pig Nose x 50mm Offset



JK-1035 35mm Pig Nose x 50mm Offset  
JK-1052 50mm Flat Face x 50mm Offset  
JK-1055 50mm Pig Nose x 50mm Offset



**KT-Juliet-Set**  
 316 Grade Satin Finish  
 Juliet Balcony Set (Not Including Glass)  
 Includes 4 x Brackets Suitable for 42.4mm Slotted Tube

**Slotted Tube**  
 RO1002  
 42.4 x 1.5mm Wall  
 304 or 316 Grade Satin  
 3 or 6 Metre Lengths

**KT-Juliet-Bracket**  
 316 Grade Satin Finish  
 Mid-Bracket for Juliet Set

\*Suitable for 12 - 17.52mm Glass

\*\*Installation instructions available upon request



**GLH1010K-30-42.4**  
**Double Glass Retainer**  
**304**



**GLH1011K**  
**Single Glass Retainer**  
**304**



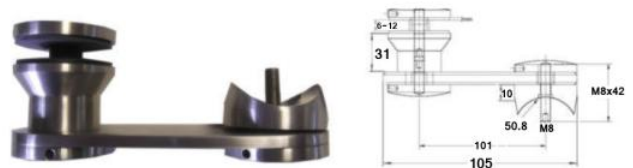
**GLH1010K-30-50.8**  
**Double Glass Retainer**  
**316**



**GLH1011K-30-50.8**  
**Single Glass Retainer**  
**316**



**GLH1010K-50-50.8**  
**Double Glass Retainer (50 x 50mm)**  
**316**



**GLH1011K-50.8**  
**Single Glass Retainer (50 x 50mm)**  
**316**



**Reverse View of the Double Glass Retainer**

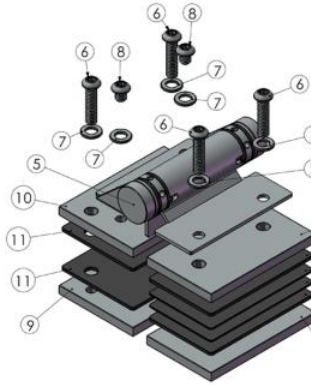


**Reverse View of the Single Glass Retainer**





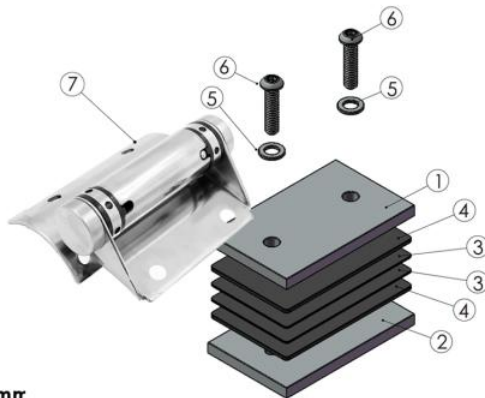
**KT-Hinge-Glass-Glass**  
Glass to Glass Hinge  
316G, Satin



- Part 1 – Front Plate 48 x 78 Quantity : 1
- Part 2 – Back Plate 48 x 78 Quantity : 1
- Part 3 – Plastic 48 x 78 x 1 Quantity : 2
- Part 4 – Plastic 48 x 78 x 2 Quantity : 2
- Part 5 – Hinge – Quantity : 1
- Part 6 – Screw M6 x 28 Quantity: 4
- Part 7 – M6 Gasket Quantity : 6
- Part 8 – Screw M6 x 10.5 Quantity : 2
- Part 9 – Back Plate 55 x 78 Quantity : 1
- Part 10 – Front Plate 55 x 78 Quantity : 1
- Part 11 – Plastic 55 x 78 x 2 Quantity : 2
- Note: Form into a single hinge fitting, a pair must x 2



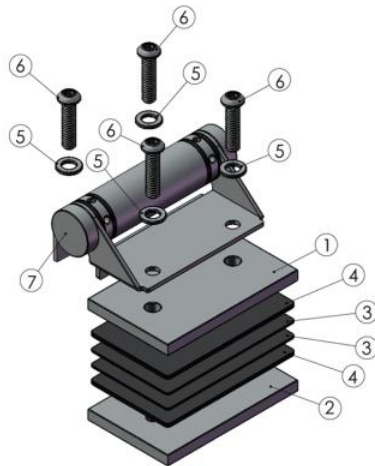
**KT-Hinge-Post-Glass**  
Glass to Post Hinge 48.3mm  
316G, Satin



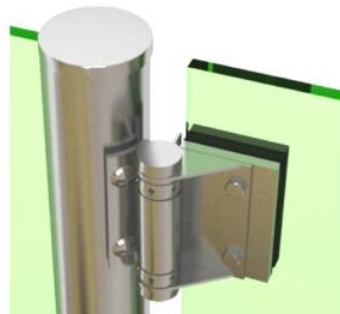
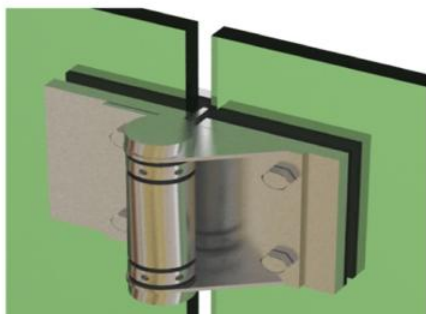
- Part 1 – Front Plate 48 x 78 Quantity : 1
- Part 2 – Back Plate 48 x 78 Quantity : 1
- Part 3 – Plastic 48 x 78 x 1 Quantity : 2
- Part 4 – Plastic 48 x 78 x 2 Quantity : 2
- Part 5 – M6 Gasket Quantity : 4
- Part 6 – M6 x 28 Screw Quantity : 4
- Part 7 – Main Body Quantity : 1
- Note: Form into a single hinge fitting, a pair must be x 2



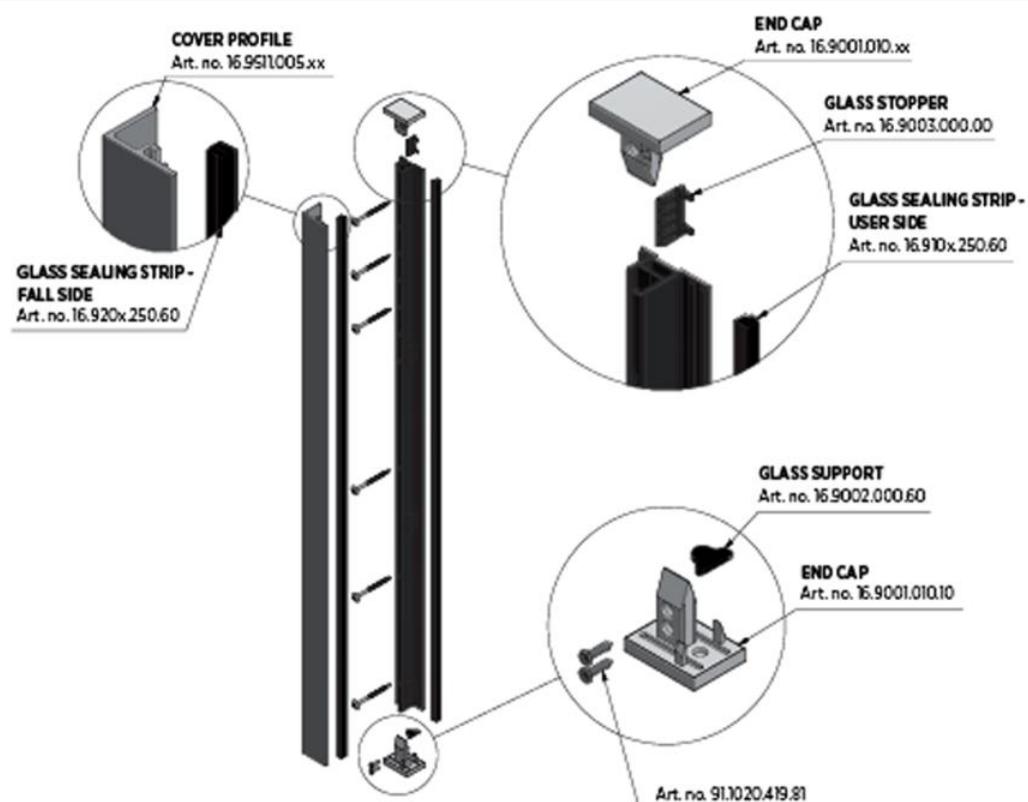
**KT-Hinge-Flat-Glass**  
Glass to Square Post Hinge  
316G-Satin



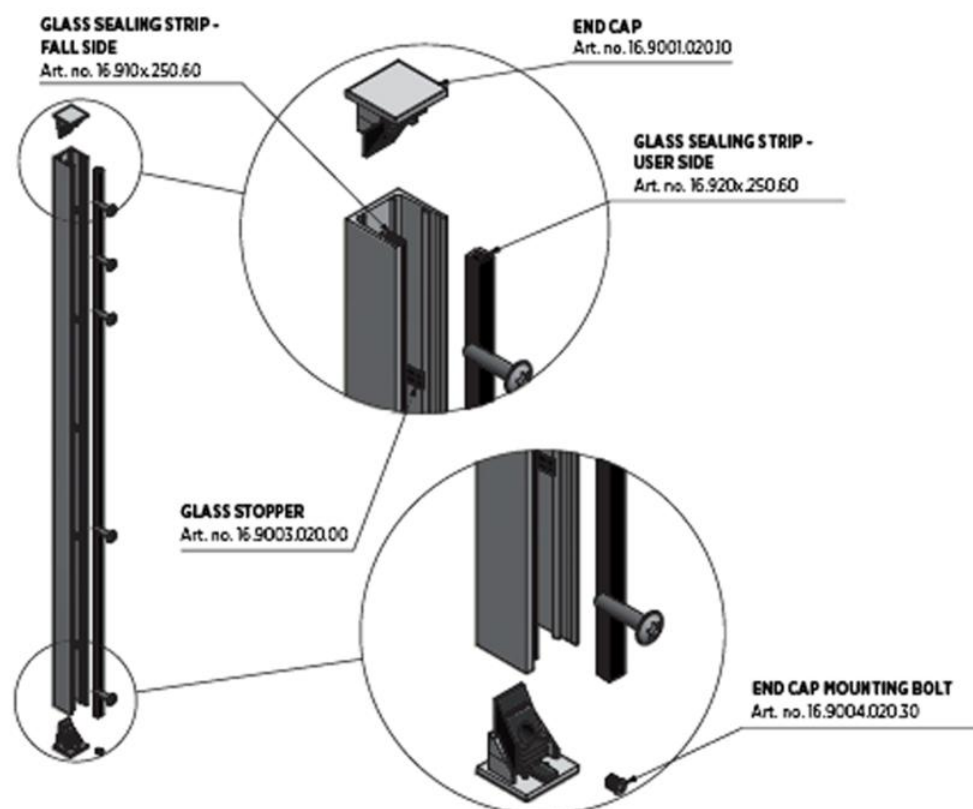
- Part 1 – Front Plate 48 x 78 Quantity : 1
- Part 2 – Back Plate 48 x 78 Quantity : 1
- Part 3 – Plastic 48 x 78 x 1 Quantity : 2
- Part 4 – Plastic 48 x 78 x 2 Quantity : 2
- Part 5 – M6 Gasket Quantity : 4
- Part 6 – M6 x 28 Screw Quantity : 4
- Part 7 – Main Body Quantity : 1
- Note: Form into a single hinge fitting, a pair must be x 2

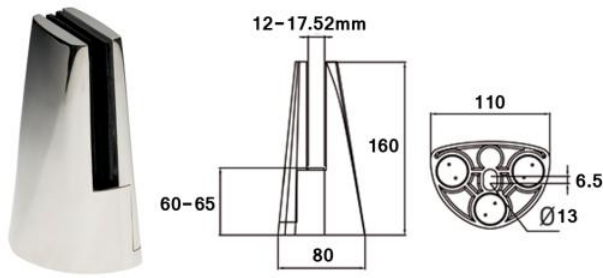


## SKYFORCE TOP MOUNT

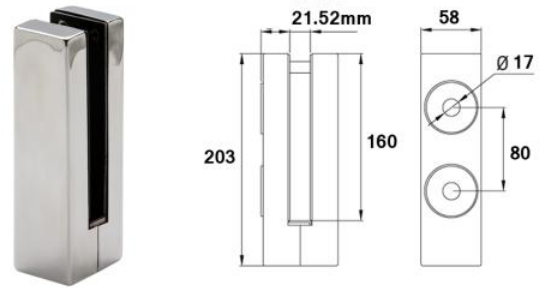


## SKYFORCE SIDE MOUNT





CC-780-BA(Mirror)  
CC-780-S(Satin)  
Base Spigot - 12, 15 & 17.52mm Glass



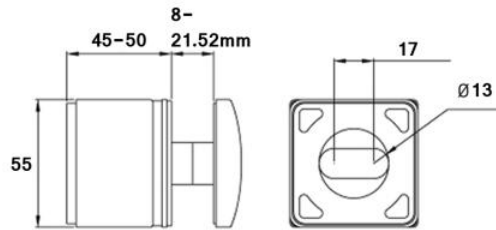
CC-791-BA(Mirror)  
Side Fix Spigot  
17.52 & 21.52mm Glass



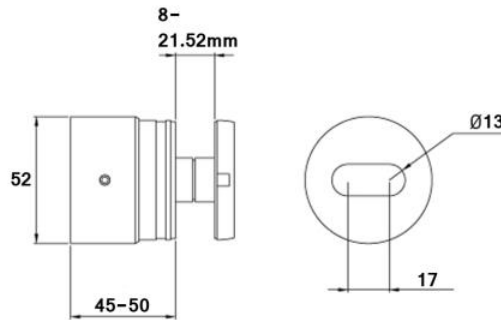
BR-2031  
(Face-Fixing Spanner)



CC-772-BA(Mirror)  
CC-772-S(Satin)  
Adjustable Glass Stand-Off (Square)



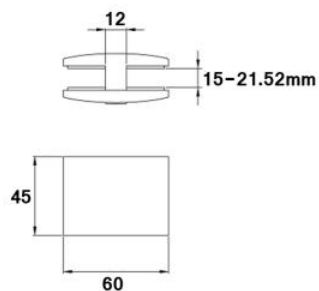
CC-775-050-BA(Mirror)  
CC-775-050-S(Satin)  
Adjustable Glass Stand-Off (Round)



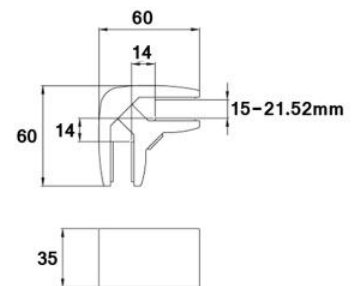
BT-2030 (C-Spanner)



KLH21.5MM-180DEG  
Satin  
15-21.52mm Glass  
0.25kg



KLH21.5MM-90DEG  
Satin  
15-21.52mm Glass  
0.25kg







SB-01 (0.74kN/m)  
SB-02 (1.5kN/m)  
SB-03 (3kN/m)



SB-A1 (0.74kN/m)  
SB-A2 (1.5kN/m)  
SB-A3 (3kN/m)



SB-0.5S (0.36kN/m)  
SB-01S (0.74kN/m)  
SB-02S (1.5kN/m)



SB-A1S (0.74kN/m)  
SB-A2S (1.5kN/m)



SB-0XS  
(Parapet Wall System)

**Kensington**  
Balustrade Systems  
**UNIQ**  
SMART BALUSTRADES

Full brochure available detailing; Test Reports, BIM Details, Detailed Drawings, and Installation Instructions