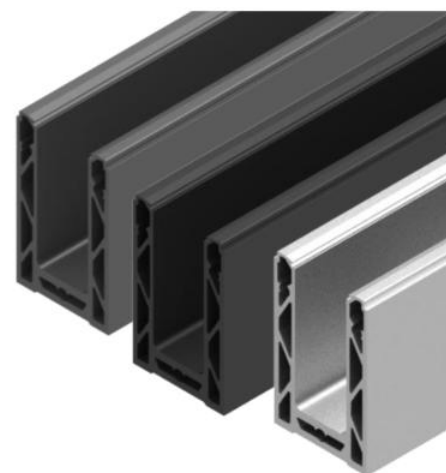


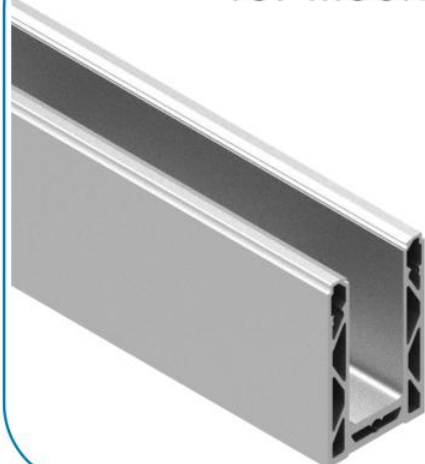
# Aluminum Glass Railing System

Suitable For 12 - 21.52mm Glass  
Available in Satin, Black, and Anthracite Grey

Please Request Full Marketing PDF for Dimensional Drawings



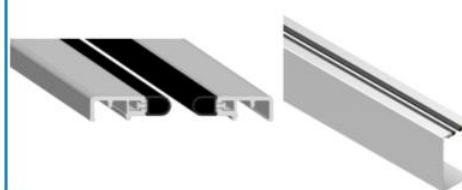
## TOP MOUNT



### GASKETS & WEDGES



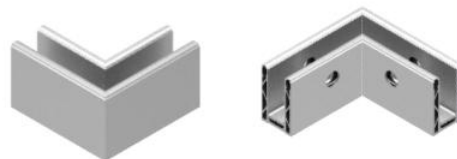
### TOP COVERS / CLADDINGS



### END CAP



### CORNERS



## SIDE MOUNT



### CONNECTING PINS

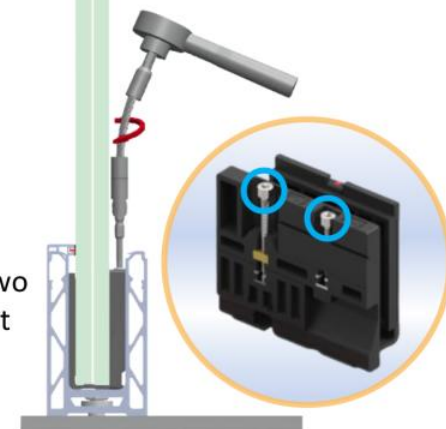


### Flexible bit (optional)



### Tilt - Adjustable

±1°



- ★ Complete System
- ★ Easy Installation




Glass alignment is tilt adjustable by screwing the two fixings on the wedge, without removing glass.



### Gaskets & Wedges Set to Glass

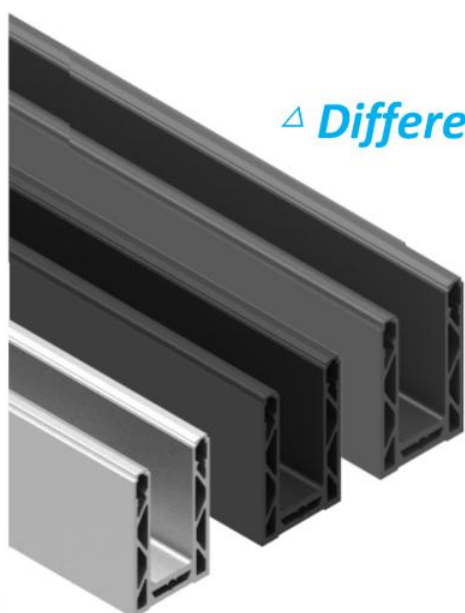
Glass (mm)	Adj. Wedges	Colour - Glass	Cover + Gasket (Front)	Cover + Gasket (Back)
12 / 12.76 / 13.52		Yellow		
15		White		
16.76 / 17.52		Red		
19		Orange		
20.76 / 21.52		Green		

### Recommended Fixings

Application	Type of Fixing	Size of Fixing	Sample Image
Concrete	Hexagon Head Expansion Screws or Hexagon Head w/ Nut (Non-Expansion)	M8 x 100 (Expansion) or M12 x 100	
Wood	Hexagon Head Wood Screws	ST12 x 100	
Metal Frame	DIN 933 Hexagon Head Bolts	M12 x 100	

\* Size of fixing to be adjusted according to the actual application, please inquire your installer.

△ *Different colours for your own choice*



- ✓ *Satin*
- ✓ *Black*
- ✓ *Anthracite*

